

SIVICE PLANT CZECH REPUBLIC

GROUND MOUNTED INSTALLATION

- Enough electricity to power 170 households
- System performance monitored continuously and reported online
- Successful operation has lead to orders for additional modules

604

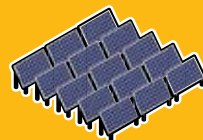
kW SYSTEM
SIZE

571

MWh ANNUAL
CAPACITY

371

TONS CO₂ SAVED
ANNUALLY



POWER PLANT
INSTALLATION

When ETL-Ekotherm sought an industry leading supplier for its solar projects, the Czech company turned to REC and its higher environmental standards.



“REC modules are high quality, very efficient, and manufactured according to the highest environmental standards”.

ZDENEK LOVIAR, MANAGING DIRECTOR

THE 2,745 GROUND-MOUNTED REC 220AE solar modules at the PV power plant in Pozořice, Czech Republic, represent one of the larger joint projects for REC and ETL-Ekotherm. Located in the southern region of the country where abundant sunlight favors solar, the plant is expected to generate 570 MWh of electrical power annually. In Prague, hundreds of kilometers from the installation site, ETL-Ekotherm can easily track the system's power output data online.

The plant was completed in October 2009, The owner of the Pozořice PV plant is TOPEMA, spol. s r.o. To minimize aesthetic impact they situated the plant on a broad plain in an industrial area.

ETL-Ekotherm entered the market in 1990 as specialists in heating technology. In the past few years ETL's wide ranging product portfolio has expanded to include PV energy products. When the forward-thinking company decided in 2008 to find an



REC is a leading vertically integrated player in the solar energy industry. REC is among the world's largest producers of polysilicon and wafers for solar applications, and a rapidly growing manufacturer of solar cells and modules. REC is also engaged in project development activities in selected PV segments. Founded in Norway, REC is an international solar company, employing more than 4,000 people worldwide. REC had revenues in excess of NOK 9 billion in 2009, approximately EUR 1 billion and approximately USD 1.4 billion.

www.recgroup.com

environmentally friendly module manufacturer, they chose REC. The high quality of their products and the sustainability of their production processes made REC a natural choice. REC modules are conceived, designed and manufactured in accordance with Scandinavian tradition and design. Extensive use of hydroelectric power at many of its manufacturing sites has also helped REC modules obtain the fastest energy payback time in the industry. REC now supplies PV modules for all of ETL's solar projects.

“I'm proud to be a business partner and distributor of REC modules. We focus on high quality and high environmental standards. We chose REC because their manufacturing practices are among the greenest in the industry.” Zdenek Loviar, Managing Director, ETL-Ekotherm.

PROJECT OVERVIEW

SIVICE POWER PLANT

POWER PLANT

Owner:
Topema, spol. s r.o.

Location:
Pozorice, Czech Republic

Type of Installation:
Ground-mounted

System Size:
604 kW

Module Types:
REC 220AE

Number of modules installed:
2,745

Annual capacity:
570 MWh

Completion Date:
Fall 2009

Developer:
ETL-Ekotherm a.s.

