

SOLAR'S MOST TRUSTED



# REC ALPHA PURE PANELS INSTALLATION MANUAL

- REC ALPHA PURE 2
- REC ALPHA PURE-R
- REC ALPHA PURE-RX

FOR ALL ALPHA PURE SOLAR PANELS CERTIFIED ACCORDING TO IEC 61215 & IEC 61730 STANDARDS

# TABLE OF CONTENTS

|   |             |
|---|-------------|
| <b>INTRODUCTION</b>                                 | <b>1-4</b>  |
| USE OF THIS MANUAL                                  | 1-4         |
| YOUR RESPONSIBILITY AS AN INSTALLER                 | 1-4         |
| SUPPORT   | 1-4         |
| LIABILITY DISCLAIMER                                | 1-4         |
| LIMITED WARRANTY                                    | 1-4         |
| <b>SAFETY MEASURES</b>                              | <b>1-5</b>  |
| SAFETY IN THE WORKING AREA                          | 1-5         |
| PREVENTING CURRENT GENERATION                       | 1-5         |
| SPECIFIC HAZARDS OF DC ELECTRICITY                  | 1-5         |
| <b>PANEL HANDLING</b>                               | <b>1-6</b>  |
| <b>CHOOSING AN INSTALLATION LOCATION</b>            | <b>1-6</b>  |
| <b>ELECTRICAL INSTALLATION</b>                      | <b>1-7</b>  |
| ELECTRICAL REQUIREMENTS                             | 1-7         |
| <b>MECHANICAL INSTALLATION</b>                      | <b>1-8</b>  |
| FIRE GUIDELINES                                     | 1-8         |
| ORIENTATION   | 1-8         |
| <b>PANEL INSTALLATION</b>                           | <b>1-9</b>  |
| SECURING OF PANELS                                  | 1-9         |
| MOUNTING METHODS: SLIDE IN SYSTEMS                  | 1-10        |
| MOUNTING METHODS: MOUNTING HOLES                    | 1-10        |
| DRAINAGE HOLES                                      | 1-10        |
| GROUNDING   | 1-11        |
| CONNECTIONS AND CONNECTORS                          | 1-11        |
| CONNECTORS  | 1-12        |
| CUTTING THE CABLES                                  | 1-12        |
| CABLE MANAGEMENT                                    | 1-12        |
| <b>PANEL MAINTENANCE</b>                            | <b>1-13</b> |
| CLEANING INSTRUCTIONS                               | 1-13        |
| SYSTEM INSPECTION                                   | 1-13        |
| RECYCLING   | 1-13        |
| DISPOSAL OF OLD ELECTRICAL AND ELECTRONIC EQUIPMENT | 1-13        |
| <b>SPECIAL INSTALLATIONS</b>                        | <b>1-14</b> |
| WATER PLATFORMS                                     | 1-14        |
| MODULE LEVEL POWER ELECTRONICS                      | 1-15        |

|  |            |
|--|------------|
| <b>INSTALLATION OF REC ALPHA PURE 2 SERIES PANELS</b>  | <b>2-1</b> |
| MOUNTING REC ALPHA PURE 2 SERIES PANELS WITH CONTINUOUS RAILS PARALLEL TO LONG SIDE OF THE PANEL   | 2-2        |
| MOUNTING REC ALPHA PURE 2 SERIES PANELS WITH CONTINUOUS RAILS PARALLEL TO SHORT SIDE OF THE PANEL  | 2-3        |
| MOUNTING REC ALPHA PURE 2 PANELS WITH SHORT RAILS  | 2-4        |
| SIX POINT MOUNTING: REC ALPHA PURE 2   | 2-5        |
| MIXED SIX-POINT MOUNTING FOR SHORT RAILS: REC ALPHA PURE 2   | 2-6        |
| <b>INSTALLATION OF REC ALPHA PURE-R SERIES PANELS</b>  | <b>3-1</b> |
| MOUNTING REC ALPHA PURE-R SERIES PANELS WITH CONTINUOUS RAILS PARALLEL TO LONG SIDE OF THE PANEL   | 3-2        |
| MOUNTING REC ALPHA PURE-R SERIES PANELS WITH CONTINUOUS RAILS PARALLEL TO SHORT SIDE OF THE PANEL  | 3-3        |
| MOUNTING REC ALPHA PURE-R PANELS WITH SHORT RAILS  | 3-4        |
| SIX POINT MOUNTING: REC ALPHA PURE-R   | 3-5        |
| <b>INSTALLATION OF REC ALPHA PURE-RX SERIES PANELS</b>   | <b>4-1</b> |
| MOUNTING REC ALPHA PURE-RX SERIES PANELS WITH CONTINUOUS RAILS PARALLEL TO LONG SIDE OF THE PANEL  | 4-2        |
| MOUNTING REC ALPHA PURE-RX SERIES PANELS WITH CONTINUOUS RAILS PARALLEL TO SHORT SIDE OF THE PANEL | 4-3        |
| MOUNTING REC ALPHA PURE-RX PANELS WITH SHORT RAILS   | 4-4        |
| SIX POINT MOUNTING: REC ALPHA PURE-RX  | 4-5        |
| MIXED SIX-POINT MOUNTING FOR SHORT RAILS: REC ALPHA PURE-RX  | 4-6        |
| SIX-POINT MOUNTING (EXTREME LOAD): REC ALPHA PURE-RX   | 4-7        |

# INTRODUCTION

Thank you for choosing REC photovoltaic panels for your installation. REC solar panels are ideal for delivering long-lasting and reliable power output. They have been created through intelligent design and are manufactured to the highest quality and environmental standards. With correct installation and maintenance, REC panels will provide decades of clean and renewable energy.

Please read this entire manual carefully. It contains critical information on safety, as well as detailed instructions for the installation, operation and maintenance of the panels. Failure to follow these procedures will invalidate the warranty. Review all instructions and safety notes in this manual before working on the system. Failure to do so may lead to injury or damage to property.

## USE OF THIS MANUAL

This manual describes the procedures for the terrestrial installation of all Alpha Pure family panels certified according to IEC 61215 & IEC 61730 standards. This includes all variants (indicated by the appropriate suffix in the panel name). The installed panel is considered to be in compliance with IEC 61215 & IEC 61730 only when mounted in the manner specified by this installation manual. Note that any panel without a frame (laminated) is not considered to comply with the requirements of IEC 61215 & IEC 61730 unless mechanically installed with hardware that has been tested and evaluated with the panel under this standard or by a field inspection certifying that the installed panel complies with the requirements of IEC 61215 & IEC 61730. Except where specifically stated, the information and drawings in this manual refer to all frame, backsheet, and cell types; the illustrations are a generic representation of the instructions regardless of color or exact design. Throughout the manual, you will see sections which highlight important information or notes:

---

 **WARNING** Indicates potential for damage to personal safety.

---

 **CAUTION** Indicates potential for damage to the array or property.

---

 **NOTE** Indicates important notes to help with the installation.

## YOUR RESPONSIBILITY AS AN INSTALLER

Installers are responsible for the safe and effective installation and operation of the system and for adhering to all applicable local standards and regulations. Prior to installation installers must check all current regulations and permits concerning solar installations and ensure all local directives are observed. Furthermore, installers are responsible for the following:

- Only qualified personnel must perform work on photovoltaic systems such as installation, commissioning, maintenance and repairs
- Be sure to follow the safety instructions for all system components
- Ensuring the REC panels are in a suitable condition for use and appropriate for the particular installation and environment
- Ensuring a safe installation of all aspects of the electrical array
- All tools and equipment should be properly maintained and inspected prior to use

As this manual contains instructions for different product variants, ensure you follow the instructions for the correct product where specified.

## SUPPORT

Do not attempt to install REC solar panels if you are unsure of the procedure or suitability. For further support, questions or guidance with your installation, please call your distributor or contact your REC sales office, which can be found at: [www.recgroup.com/contacts](http://www.recgroup.com/contacts).

## LIABILITY DISCLAIMER

REC SOLAR PTE. LTD. accepts no liability for the usability and functionality of its photovoltaic panels if the instructions in this guide are not observed. Since compliance with this guide and the conditions and methods of installation, operation, use and maintenance of the panels are not checked or monitored by REC SOLAR PTE., REC SOLAR PTE. Ltd. accepts no liability for damage arising from improper application or incorrect installation, operation or maintenance. This does not apply to damages due to a panel fault, in cases of loss of life, bodily injury or damage to health or in the event of a grossly negligent breach of obligations on the part of REC SOLAR PTE. LTD. and/or in the event of an intentional or grossly negligent breach of obligations by a legal representative or vicarious agent. REC reserves the right to make changes or amendments to this manual at any time, without prior notice. This document may be produced in different languages. If there is any conflict, the English language version shall be definitive.

## LIMITED WARRANTY

The REC Limited Warranty is available to download from [www.recgroup.com/warranty](http://www.recgroup.com/warranty). Ignoring any of the instructions in this manual may be classed as improper installation or use and invalidate the Warranty Terms and Conditions. If you have any questions about installation and the Warranty validity, please contact REC.

# SAFETY MEASURES

Installers are responsible for the safe and effective installation and operation of the system and for adhering to all applicable local and national standards and regulations. All relevant local codes and regulations must be referred to and observed.

---

## WARNING ELECTRICAL SHOCK

- Solar panels generate direct current (DC). Once current is flowing, breaking a connection (e.g., disconnecting two panels) can cause an electrical arc. Unlike low voltage AC wiring, DC arcs are not self-extinguishing; they are potentially lethal burn and fire hazards, capable of high temperatures that can destroy contacts and connectors:
- Isolate the system and remove/open the inverter AC fuse/circuit breaker from the grid before carrying out any maintenance or repair work.
- Follow inverter manufacturer's installation, handling and operating instructions.

## SAFETY IN THE WORKING AREA

Installation of REC solar panels may involve working on rooftops or raised platforms. Ensure all local regulations regarding working at heights and fall protection are followed. Before beginning work on an installation, ensure all working surfaces are structurally sound and capable of bearing the weight of employees and required equipment.

## PREVENTING CURRENT GENERATION

To prevent the panels automatically generating current (electricity) when exposed to light, shield the system with a non-transparent cover during installation, maintenance or repair work.

## SPECIFIC HAZARDS OF DC ELECTRICITY

The voltage produced by a single panel, and panels connected in series (voltages added together), or in parallel (currents added together) can be dangerous. Although the fully insulated plug contacts on the panel's output cables provide touch-safe protection, the following points must be observed during handling to avoid the risk of sparking, fire hazards, burns and lethal electric shocks:


- Exercise extreme caution when wiring panels and look out for damaged or dirty cables etc,
- Never insert metallic or other conductive objects into plugs or sockets,
- Ensure that all electrical connections are completely dry before assembly,
- Keep all materials, tools, and working conditions dry and tidy,
- Use appropriate safety equipment e.g., non-slip footwear, insulated gloves and insulated tools,
- Solar panels produce current when exposed to sunlight. Do not connect the system to the inverter during solar exposure.

# PANEL HANDLING

In order to avoid damage, all REC solar panels should be handled with care and protected from damage at all times. All warnings and instructions on the packaging should be observed. Follow these guidelines when unpacking, transporting, carrying, installing or storing panels:

- Record the serial numbers prior to installation and note the information in the system documentation,
- Carry the panels using both hands and do not use the junction box or cables as a grip,
- Do not allow the panels to sag or bow under their own weight when being carried,
- Do not subject panels to loads or stresses, e.g., leaning on them or through the placing of weight on them,
- Do not stand or walk on the panels,
- Avoid dropping the panels as any damage caused may be unseen,
- Keep all electrical contacts clean and dry,
- Do not apply force to the backsheet,
- Avoid using sharp or pointed objects if panels require marking,
- Never apply paints, adhesives or detergents to the front or rear of the panel,
- Do not use any solar panel that is damaged or has been tampered with,
- Never attempt to disassemble, modify, or adapt the panels or labels in any way as this will void the warranty.

---

 **NOTE** Use clean and protective gloves when handling the panel as this will avoid the transfer of any fingerprints or soiling to the highly-sensitive and anti-reflective glass surface, ensuring improved light transmission and avoiding any contamination.

The pallet packaging is not water- or weatherproof. Prior to installation, and to avoid damage or degradation to the packaging or panel components, pallets and panels must be stored in a controlled environment, ideally internal, where it is protected from the elements, e.g., rain, dust, and direct sunlight. If overnight storage in an uncontrolled environment is unavoidable, the panels and the pallet packaging must be protected from direct exposure to the elements and from contact with the ground, including earth, mud etc.


# CHOOSING AN INSTALLATION LOCATION

REC solar panels are designed to provide decades of durable and stable output in installations up to 2000 m above sea level. As per IEC61730 and UL61730, REC solar panels are certified to operate at environmental temperatures as low as -40°C.


The panels are not suitable for installation in potentially hazardous locations nor should they be installed in the following locations:

- Near sources of flammable gas or vapor e.g., gas containers or spray paint facilities,
- Near open flames,
- Where the panels are exposed to direct contact with salt water/spray,
- Under water or in water features,
- Where exposed to sulfur e.g., near sulfur springs or volcanoes,
- Where exposed to artificially concentrated sunlight,
- Where the panels may be exposed to harmful chemicals.

---

 **NOTE** For information regarding installations on water platforms, e.g., floating pontoons, see Special Installations.

# ELECTRICAL INSTALLATION

 **WARNING** Safety is paramount when working on an electrical installation. Always follow the electrical requirements to avoid the risk of sparking, fire hazards, burns and lethal electric shocks.

## ELECTRICAL REQUIREMENTS

### APPLICATION CLASS

REC solar panels are rated for use in electrical Application Class A, Protection Safety Class II; at hazardous levels of voltage (>35V), current (>8A) and power (>240W) where general contact access is anticipated (panels qualified for safety through IEC 61730:2023).

### SYSTEM REQUIREMENTS

REC solar panels are only for use where they meet the specific technical requirements of the complete system. Ensure other components will not cause mechanical or electrical damage to the panels. Only panels of the same type and power class should be connected.

### STRING CONFIGURATION

When connecting panels in a string, plan and execute according to the inverter manufacturer's instructions. The number of panels connected to an inverter must not exceed the voltage limits and operating range permitted by the manufacturer, nor under any circumstance exceed the maximum system voltage. The maximum system fuse rating (overcurrent protection rating) and the maximum reverse current for each panel can be found in the respective product datasheets.

The maximum number of panels in a string can be calculated by dividing the maximum system voltage of the panel by its  $V_{oc}$  accounting for the lowest ambient temperature at site. Qualified system designers can make exact calculations that account for specific project requirements and site conditions.

$$N_s = \frac{V_{sys}}{V_{oc} \times \frac{100 + (T_c \times \Delta T)}{100}}$$

|            |                                     |
|------------|-------------------------------------|
| $N_s$      | Number of panels per string         |
| $V_{sys}$  | Maximum system voltage              |
| $V_{oc}$   | Open Circuit Voltage                |
| $T_c$      | Temperature coefficient of $V_{oc}$ |
| $\Delta T$ | Lowest ambient temperature          |

$$N_s = \frac{1000V}{44.3 \times \frac{100 + (0.23 \times (25^\circ C - 15^\circ C))}{100}}$$

$$N_s = 22$$

$$N_s = \frac{1500V}{50.2 \times \frac{100 + (0.23 \times (25^\circ C - 15^\circ C))}{100}}$$

$$N_s = 29$$

### STRING CONNECTION

Panels connected in series must have the same current rating (A). The maximum number of panels that can be connected in series or parallel depends upon system design, inverter type and environmental conditions. String configuration must correspond to the specifications of other system components e.g., inverter. Refer to the reverse current rating of the panel indicated in the technical characteristics on the panel datasheet.

### WIRING LAYOUT

To minimize voltage surges (e.g., indirect lightning strikes), cables of the same string must be bundled together so loops are as small as possible. String configurations must be checked before commissioning. If open circuit voltage ( $V_{oc}$ ) and short circuit current ( $I_{sc}$ ) deviate from specification, this may indicate a configuration fault. Correct DC polarity must be observed at all times.

### ELECTRICAL RATINGS

Electrical ratings are within a specific tolerance of measured values at Standard Test Conditions (STC) as given in the technical characteristics for each panel. Allow for increased panel output as a result of conditions different to STC by multiplying the  $I_{sc}$  and  $V_{oc}$  values by a factor of 1.25 (or according to local regulations) when determining component voltage ratings, conductor ampacities, overcurrent device ratings and size of controls connected to the PV output.

# MECHANICAL INSTALLATION

## FIRE GUIDELINES

The REC solar panels covered by this manual have a Class C (referencing UL 790) fire classification. Alpha Pure Family panels are rated type 2 fire classification according to IEC61730-2:2023 (ref. ANSI/UL 61730-2);

- Check with all relevant local authorities for fire safety requirements for any building or structure on to which the panels will be installed,
- The system design must ensure that it can be easily accessed in the event of a building fire,
- Check with relevant authorities for applicable regulations concerning setbacks or other placement restrictions that may apply for roof-mounted arrays,
- The use of DC ground fault interrupters is recommended. This may also be required by local and national codes,
- All electrical appliances are a fire risk. The panel must be mounted over a fire retardant roof covering rated for the application and a distance of at least 20 mm between the panel and the mounting surface, to allow the free circulation of air beneath the panels at all times.

## ORIENTATION

The optimal mounting position of a panel results in the sun's rays falling perpendicular (i.e., at 90°) to the surface. To maximize system output, panels should be installed at the optimum orientation and tilt angle. The specifics of this depend on location and can be calculated by a qualified system designer. All panels in a string should, wherever possible, have the same orientation and tilt to ensure the system does not underperform due to mismatched outputs. Dependent on local conditions, a lower angle of installation will potentially increase the requirement for regular cleaning.

---

 **NOTE** The IP rating of the junction box provides a level of protection that allows panels to be mounted in any orientation.

# PANEL INSTALLATION

REC solar panels are designed for capturing solar radiation and can be installed where they conform to all local structural regulations. If installing REC solar panels in overhead or vertical constructions, the installer must ensure that all local building codes and regulations specific to such installations are correctly followed. There are different options for securing REC solar panels depending on the design of the array. Mounting hardware is not supplied by REC. Ensure the mounting structure can withstand anticipated wind and snow loads. Follow the mounting hardware manufacturer’s instructions and recommendations at all times.

The performance and characteristics of all REC solar panels described in this manual are certified by IEC61730:2023 for a 98th percentile module operating temperature not exceeding 80°C (Alpha Pure-R, Alpha Pure-RX, Alpha Pure 2).

In hotter regions, where high temperatures may cause a module to exceed the T[98] operating temperature, installers are recommended to consider the following:

- Increase the distance between the panel and the rooftop.
- Ensure that there are no barriers to air circulation under the panels.
- Select rooftop materials with low heat retention and high reflectivity to minimize heat build-up, helping to maintain a lower operating temperature for modules.

**CAUTION** There must be a minimum clearance gap of 20 mm between the uppermost part of the installation surface (e.g., rooftop) and the lowest part of the panel (i.e., underside of panel frame) to avoid any damage to the panel and to ensure sufficient airflow for cooling, helping to improve performance. The surface below the panels must be kept clear of any objects that may cause damage to the panel.

**NOTE** Panels must be installed so that the cells are not shaded during any time of the year as this will reduce electrical output and will impact panel operational lifetime. Ensure the front glass is clean and free of labels, stickers, or residue. REC panels are shipped without any labels, stickers, or markings on the front surface of the glass.

## SECURING OF PANELS

A typical installation of solar panels will be carried out with suitable rails and clamps. Other types of panel support, e.g., plates, must meet the same specifications. Such installations have been found to be in compliance with IEC 61215 & IEC 61730 requirements for the maximum test loads of +7000 Pa downwards pressure and -4000 Pa upwards pressure (+4,667 Pa/-2,667 Pa design loads)

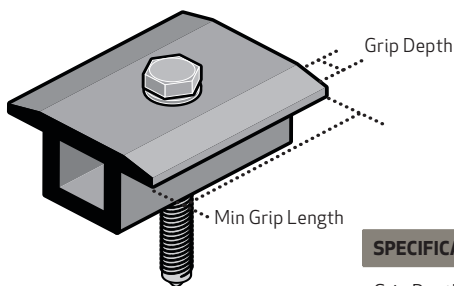
Site-specific factors such as high wind or snow levels must be taken into consideration to ensure this limit is not exceeded.

When installing on mounting rails, ensure they run underneath the panel and provide support to the frame. The positioning of the rail must ensure that the minimum clamp grip length (fig. 1-1) and the central point of the fixation, e.g., the bolt, is fully within the required clamping zone as indicated on the following pages.

REC modules must be secured with a torque as shown in the table below (fig. 1-1). Clamp installation must be carried out according to the manufacturer’s instructions, including specific hardware and torque requirements. Ensure the clamps used are suitable for the planned installation and expected system design loads.

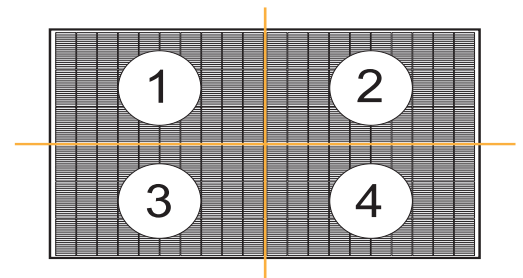
- The grip area must not extend onto the panel glass and/or cause cell shading,
- Avoid the application of excessive pressure to prevent frame deformation,
- The panel must be secured, e.g., clamped, at least once in each of the four marked zones shown below (fig. 1-2).

Fig. 1-1 Clamp Specifications



| SPECIFICATIONS  |                               |
|-----------------|-------------------------------|
| Grip Depth      | 5 - 10 mm / 0.20 - 0.39 in    |
| Min Grip Length | 40 mm / 1.6 in                |
| Torque          | 12 - 25 N-m / 106 - 221 lb-in |

Fig. 1-2 Panel Quarter Divisions



**NOTE**

In areas of snow build-up, panels can be subjected to forces in excess of the stated limit even when snow depth does not appear extreme, potentially causing damage to the panel. If the installation may be affected by this, further panel support is recommended, especially on the lower row of panels. In the case of any questions regarding mounting systems, or if the mounting system to be used does not match any of the instructions shown in this installation manual, please contact REC for further support.

## MOUNTING METHODS: SLIDE IN SYSTEMS

When installing using slide in systems the mounting system must meet the same specifications including grip lengths, depths and spacing as specified for clamping and the mounting system must be able to withstand the correct load pressures.

When installing solar panels using a slide-in system, the drainage holes found in the underside of the panel frame (fig. 1-3) must not be covered. For any questions regarding installation on such systems, please contact REC directly.

## MOUNTING METHODS: MOUNTING HOLES

The REC solar panels covered by this manual can be installed utilizing the mounting holes (11 mm x 6.6 mm (0.43 in x 0.26in)) on the underside of the panel (fig. 1-4).

**NOTE**

In the case of any questions regarding mounting systems, or if the mounting system to be used does not match any of the instructions shown in this installation manual, please contact REC for further support.

Installation must be performed in conjunction with a device, e.g., screws or lockbolts, with specifications suitable for the installation (fig. 1-5).

**CAUTION**

The product warranty will be voided if additional holes are made in the frame. All fixing and fastening materials must be corrosion resistant.

Installing Alpha Pure solar panels using the mounting holes has been found to comply with IEC 61215 & IEC 61730 requirements for downward pressure, e.g., snow, of up to 5400 Pa\* (3600 Pa design load) and upward pressure, e.g., wind, of up to 2400 Pa\* (1600 Pa design load) according to the following instructions (\*test loads apply a safety factor of 1.5 to the stated design load, e.g., design load 3600 Pa \* 1.5 = 5400 Pa test load).

When installing using mounting holes, the frame and panel edge of each panel must be supported by two rails of aluminium or galvanized steel suitable for the application and appropriate for the local environment. Observe the following procedures when using mounting holes:

- The mounting construction must be of a corrosion resistant material, e.g., aluminum or galvanized steel, and appropriate for the local environment,
- All four mounting holes in the frame must be used (fig. 1-4),
- A washer must be used between frame and rail,
- Additional electrical bonding to Ground is required for the support structure,
- REC modules must be secured with a torque between 12 - 25 N-m / 106 - 221 lb-in. Refer to the fixing device manufacturer's installation instructions for preload or torque values.

## DRAINAGE HOLES

On the long and short sides of the REC frame small drainage holes can be found that allow humidity and water to exit the frame easily and minimize the potential for damage (fig. 1-3). These are spaced 55 mm from the corner of the panel. These holes must not be used for mounting the panel, and they must not be covered by any part of the mounting structure. To enable effective drainage, the holes must remain fully open and enable water egress during and after installation. The shape and dimensions of the drainage holes may vary depending on product and/or frame design.

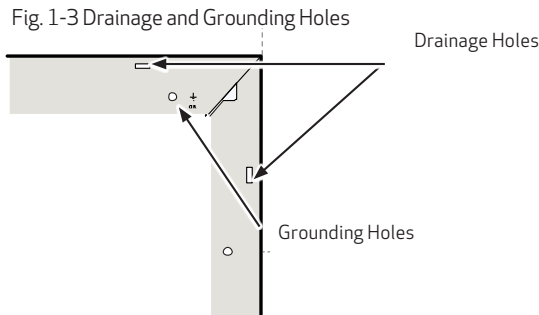
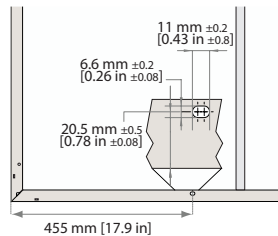
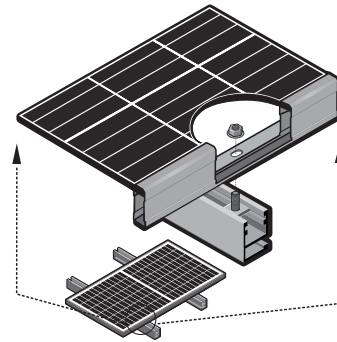


Fig. 1-5 Mounting hole installation example



| PRODUCT NAME | MATERIAL  |
|--------------|---|
| Guide        | 6105 - T5 aluminum extrusion                                |
| Bolt         | M6 x 25 drop in T-stud kit                                  |
| Nut          | M6 x Flanged hex locking nut                                |
| Washer       | $\Phi$ : 18 mm (0.71 in)<br>$\downarrow$ : 1.5 mm (0.06 in) |

Fig. 1-4 Mounting holes: REC Alpha Panels



## GROUNDING

Local regulations may require grounding of the panels. Installers are responsible for ensuring compliance with relevant local regulations. Grounding must be done using an electrical connection from the panel frame. REC solar panels have a small round grounding hole positioned near each corner of the panel on both the long side and the short side, (fig. 1-3) and can be further identified by the grounding symbol stamped in the frame next to it. Check all applicable requirements before beginning installation:

- Suitable grounding clips, lugs or other constructions must be used,
- Attach grounds to the grounding holes in the panel frames,
- Follow the grounding device manufacturer's installation instructions to ensure a safe and conductive connection, including any supplementary hardware, e.g., star washer, and tighten according to recommended torque,
- Where common grounding hardware (nuts, bolts, star washers, split-ring lock washers, flat washers and the like) are used to attach a grounding device, the attachment must be made in conformance with the grounding device manufacturer's instructions.

## CONNECTIONS AND CONNECTORS

The connector IP rating is only valid when correctly connected. All connectors and cables must be secure and tight as well as electrically and mechanically sound. UV-resistant cables and connectors approved for outdoor use must be used. Conductor gauge must be chosen to ensure DC power losses (voltage drop) are kept to a minimum (<1%).

- Observe all local regulations when selecting cables.
- For string connections, use minimum 4 mm<sup>2</sup> copper wires insulated for a maximum operating temperature of 90°C,
- Avoid exposing cables to direct sunlight and permanent tension.
- In order to ensure a safe connection between panels and BOS equipment, the following instructions must be followed to protect the connections from the elements.

## ⚠ WARNING

- Safety is paramount when working with electrical connectors.
- Ensure that any installation work is not carried out on live or load-carrying parts.
- Connections must not be disconnected under load and the system must be isolated from the grid before carrying out any maintenance or repair work.

## CONNECTORS

To ensure connector compatibility and reduce the potential for damage to the panels and the wider installation, REC only permits the mating of connectors of the same manufacturer, type, and system rating (like-for-like).

- ⓘ NOTE • Some countries and/or regions have specific regulations regarding the mating of connectors. Installers are responsible for ensuring the compliancy of the system with such local regulations.
- ⓘ NOTE • To avoid galvanic corrosion, galvanized or hot dipped zinc plated fasteners are preferred, however stainless steel fastening materials are equally suitable.
- Negative grounding of the panels is not required by REC.

## CUTTING THE CABLES

The cutting of cables is only permitted in order to replace a factory-installed connector with another brand of connector to ensure 'like-for-like' mating when connected to a non-REC external device. All other changes are prohibited and will invalidate the REC warranty.

- The connector replacement procedure must be carried out correctly and according to the replacement connector manufacturer's instructions.
- The selected replacement connector must also fulfil all relevant technical specifications and be certified according to applicable standards (e.g., IEC 62852 or UL 6703) to ensure they are fit for purpose and safety.
- Use of any chemicals or lubricants on the connectors or contacts may only be carried out in line with the connector manufacturer's instructions.

The REC warranty does not extend to cover any fault traceable to the replaced connectors. Any other modification to the panel is prohibited, including the opening of the junction box, unless explicitly authorized by REC. Doing so will invalidate the warranty.

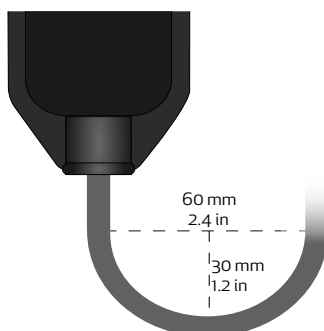
## CABLE MANAGEMENT

To ensure a long life span of the cables and reduce the potential for damage to the cables, follow the instructions below:

- To prevent stress on the junction box casing, ensure the cable exits the junction box in a straight line before any bend in the cable and ensure cables are free from any external load.
- The cables must have a minimum bending radius of 30 mm to avoid damage to the insulation (fig. 1-6),
- Ensure cables do not hang loose where they may be damaged through friction or stress, e.g., caused by mechanical abrasion or grazing animals,
- Protect connectors from falling or dropping water by locating them directly beneath a panel,
- Cables must be firmly secured to the structure, without over-tightening, as this can deform the cable insulation using UV-resistant cables,
- When securing the connector, place it so that it has with sufficient air circulation all around. This allows the connector to dry effectively and avoids the risk of damage or degradation of the connection,
- Secure the cable either side of the connectors to ensure no stress is exerted on the connector casing or cable entry,
- To enable correct cooling and drying of the connectors, do not add extra protection to the connector, e.g., heat shrink, grease or tape.

More detailed information is given in the Guide to Best Practice - Connections and Connectors which can be found via the REC online Download Center ([www.recgroup.com/downloads](http://www.recgroup.com/downloads))

Fig. 1-6 Minimum Cable Distance



# PANEL MAINTENANCE

## CLEANING INSTRUCTIONS

REC solar panels have been designed for easy maintenance, however cleaning solar panels can assist in optimizing electricity output. The need for cleaning will vary dependent on location, rainfall, pollution levels and the angle of installation – the lower the angle of installation, the more cleaning will be required. 'Normal' rainfall will naturally clean the panels if installed at a sufficient angle to ensure water runs off the surface. To optimize electrical output it is recommended to clean the panels when dirt can clearly be seen on the glass surface.

- 
- CAUTION**
- Panel cleaning must always be carried out when the panels are cool, e.g., early morning, to avoid breakage through thermal shock.
  - Use of high pressure hoses or cleaners is not permitted as these may damage the panels, laminate or cells.

- 
- NOTE**
- Avoid putting pressure on the on the panel surface when cleaning or drying, e.g., leaning, standing or resting buckets on it.
  - Use only deionized water free from grit and physical contaminants, at ambient temperature and use a sponge, microfiber cloth or a soft brush to wipe away the dirt (rainwater, tap water or diluted alcohol may also be used as a secondary solution).
  - For further cleaning a mild, biological and biodegradable washing-up liquid may be used.
  - If stains require more effort to be removed, Isopropyl alcohol of a concentration less than 10% may be used. Acidic or alkaline detergent may not be used.

Using a soft rubber squeegee, wipe the panel surface from the top downwards to remove any residual water from the panel glass. Take care not to scratch the surface or introduce foreign elements that may cause damage to the panel. Always rinse the panel with plenty of water. Panels can be left to dry in the air or wiped dry with a clean and soft cloth or chamois.

For more information on cleaning REC solar panels, consult the REC Cleaning Information Sheet which is available to download from the online REC Download Center [www.recgroup.com/downloads](http://www.recgroup.com/downloads). If in doubt at any time when cleaning the panels, stop and obtain professional advice.

## SYSTEM INSPECTION

The system should be inspected regularly to ensure that:

- Fasteners are secure, tight and free from corrosion,
- Electrical connections are secure, tight, clean and free of corrosion,
- The mechanical integrity of the cables is intact,
- Bonding points to ground are tight, secure and free from corrosion (which could break the continuity between the panels and ground).

## RECYCLING

REC makes every effort to ensure panel packaging is kept to a minimum. Please check local recycling capability. The paper and cardboard packaging can be recycled and the protective wrapping and panel separating blocks are also recyclable in many areas. Recycle packaging and panels according to local guidelines and regulations.

## DISPOSAL OF OLD ELECTRICAL AND ELECTRONIC EQUIPMENT

Panels should be recycled at the end of their useful life according to local guidelines and regulations. By ensuring REC solar panels are disposed of correctly, you will help prevent any negative impact on the environment and human health. The majority of the panel components can be recycled.

For installations in the European Union, REC solar panels are subject to WEEE regulations. The symbol in fig. 1-7 as found on the label on the rear of the panel indicates that this product must not be treated as household waste and must be disposed of at an appropriate collection point for the recycling of electrical and electronic equipment. The recycling of the different components and materials will help to conserve natural resources.

The European WEEE (Waste Electrical and Electronic Equipment) Directive regulates the correct recycling of electronic and electrical waste in all member states of the European Union (EU). For end-customers it is a free of charge disposal system, financed by the manufacturers and importers, where panels can be brought to a local recycling depot, or in the case of larger numbers, be picked up from site, as is the case with other electrical equipment, e.g., refrigerators or televisions. The extensive process steps for proper disposal are strictly regulated and place no further obligations on the owner of the panels. For more information about the recycling of this product, please contact your local recycling authority or recycling center.

Fig. 1-7 WEEE Symbol




# SPECIAL INSTALLATIONS

## WATER PLATFORMS

The REC solar panels covered by this manual may be installed on water platform-type mounting systems (note that the certification testing of solar panels does not include testing on these types of systems). When installing REC solar panels on fixed position (e.g., anchored) water platforms, for example, floating pontoons, follow the instructions below specific to such applications. Failure to do so will invalidate the warranty.

---

 **NOTE** For all installations on water platforms, first advise REC before the start of installation in case of any site specific instructions or constraints.

### INSTALLATION ENVIRONMENT

#### Installation site

- REC solar panels may only be installed on closed bodies of fresh water where water salinity does not exceed 25 mS/cm at 25°C (15 PSU). This specifically excludes mounting on sea and ocean applications.
- The maximum permitted wave height must not exceed 1 m from the crest to the trough of the wave.

#### Floating platforms

- When using a floating platform, follow the manufacturer's instructions regarding installation, maintenance, inspection and cleaning at all times.

#### Minimum installation height

- The minimum installation height of REC solar panels on floating platform systems is 15 cm and is defined as the height between the water surface and the lowest edge/part of the panel during normal operation. This will help to shield the panel from direct water spray.

---

 **NOTE** Negative system grounding is required for REC solar panels installed on a floating platform.

### INSTALLATION INSTRUCTIONS

#### System installation

- All cables used for the installation must have sufficient length and slack to prevent damage due to water level changes and wave motions.

#### Mounting panels

- Installation of REC solar panels must be in accordance with the aforementioned standard mounting instructions.
- The junction box should be oriented as far as possible from the water surface according to system design and the junction box, cables and connectors must be protected from direct water splash.
- The installation must allow for sufficient spacing between individual panels, in order to avoid all contact as caused by the natural movement and flexing of the floating structure.


#### Panel protection

- In areas with high avian activity, additional bird repelling devices may be installed as long as they do not adversely affect system performance, e.g., shading or to the local environment etc.
- If using lightning protection equipment on the floating installation, all relevant local regulations must be respected.

### MAINTENANCE

Regularly inspect the installation to ensure all panels are securely mounted.

---

 **NOTE** For installations with high avian activity, system cleaning may be required at more frequent intervals to reduce shading of panels caused by bird defecation.

### SAFETY

- Immediately disconnect the system if the installation or the floating platform exhibits deviation from standard operating conditions.
- In the event of the floating platform being submerged, disconnect the DC connection at the inverter immediately. Do not attempt to salvage panels when sunlight is present.

## MODULE LEVEL POWER ELECTRONICS

This section is applicable to all REC products referred to in this installation manual.

Module Level Power Electronics (MLPE) is the name given to the range of panel-level components that can be installed in PV system circuits installed on or in buildings to reduce shock hazard for emergency responders. MLPE devices can be supplied pre-installed by panel manufacturers or as a 'retro-fit' system made by third-party manufacturers.

MLPE devices may be used on REC solar panels where desirable or mandatory (note that the certification testing of solar panels does not include testing with MLPE devices). When installing an MLPE device directly onto the frame structure of an REC solar panel, follow the instructions provided by the device manufacturer and the instructions specific for REC solar panels given below. Failure to follow the manufacturer and the REC instructions may invalidate the warranty.

### INSTALLATION

Installation

- MLPE devices must be suitable for the location where the solar panels installed. Observe any limitations set by the MLPE manufacturer. (e.g., minimum mounting gap between MLPE and rooftop).
- When attaching an MLPE device directly to the solar panel frame, follow the MLPE manufacturer's instructions to ensure optimum mounting of the device and prevent any slippage during operation.
- When installing an MLPE device to the panel frame, ensure to leave a gap of minimum 15 mm between the MLPE device and any further part of the module architecture to ensure there is sufficient airflow around the device, e.g., between the MLPE device and junction box and/or support bar.
- Wherever possible, the installation of the MLPE device should not cover the product label on the rear of the panel.
- MLPE devices may also be attached to the mounting construction. In such cases, refer to the instructions provided by the manufacturer.

---

### CAUTION

- To avoid damage to the panel and to allow for thermal expansion, there must be a minimum gap of 2.5 mm between the MLPE device and the panel backsheet.
- The mounting holes in the panel frame must not be used for the installation of MLPE devices.
- The drilling of extra holes in the frame is not permitted and will invalidate the panel warranty.
- The center point of each clamp and the minimum grip length must be fully located in the same clamping zones to be rated to that load. If the panel is secured in zones with different load values, it is rated to the lowest load value only.

### CONNECTION

- First ensure the installation of the MLPE device is secure and safe.
- Following the device manufacturer's instructions to connect the cables from the MLPE device to the solar panel correctly, usually positive (+) to positive (+), and negative (-) to negative (-).
- Connection to the next panel in the array should be done from the 'free' cables.

### SAFETY

- Immediately disconnect the device if there is a problem during installation.

# INSTALLATION OF REC ALPHA PURE 2 SERIES PANELS



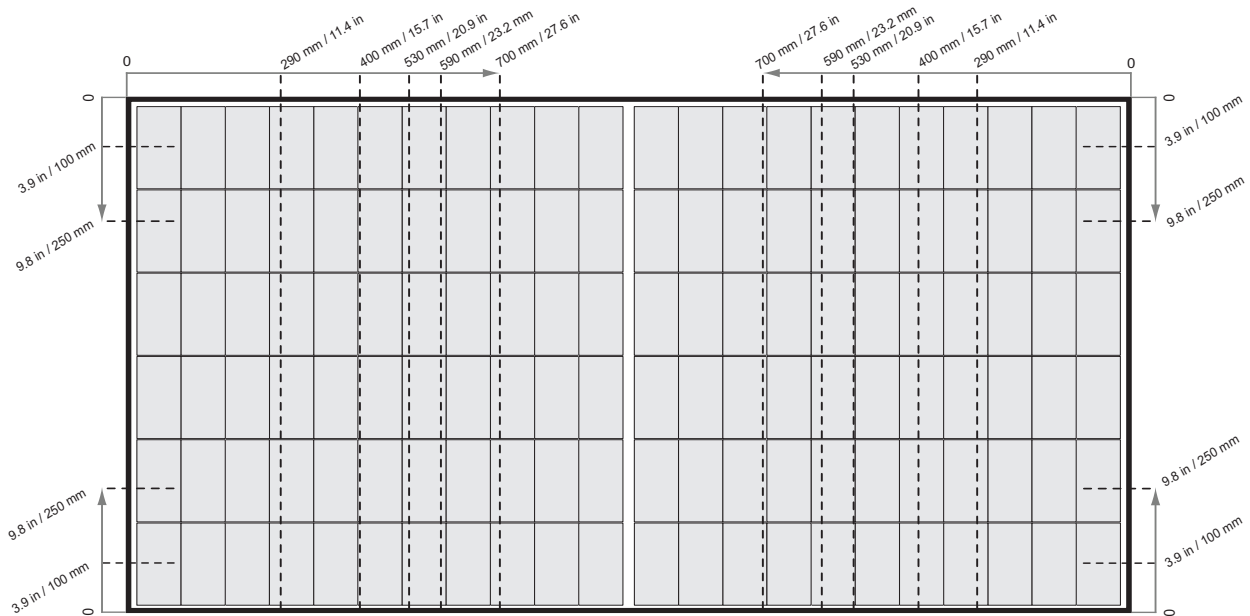
INCLUDES THE FOLLOWING PRODUCT CODES:  
RECXXXAA PURE 2

# INSTALLATION OF REC ALPHA PURE 2 SERIES PANELS

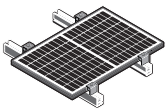
## MOUNTING REC ALPHA PURE 2 SERIES PANELS WITH CONTINUOUS RAILS PARALLEL TO SHORT SIDE OF THE PANEL

A continuous rail (or other support structure) spans the complete underside of the panel

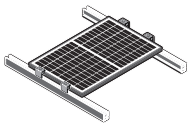
Fig. 2-1 Clamping of REC Alpha Pure 2 panels with Rails parallel to the Short Side of the Panel



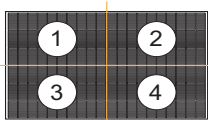
| Clearance Gap                         | 20 - 40 mm<br>0,8 - 1,6 in                         | 40 - 60 mm<br>1,6 - 2,4 in                        | >60 mm<br>>2,4 in                                 |
|---------------------------------------|--|---|---|
| Clamping Zone                         | Test Load<br>Design Load                           | Test Load<br>Design Load                          | Test Load<br>Design Load                          |
| <b>0 - 290 mm</b><br>0,0 - 11,4 in    | -  | <b>+1200 Pa / -1200 Pa*</b><br>+800 Pa / -800 Pa  | <b>+2400 Pa / -2400 Pa</b><br>+1600 Pa / -1600 Pa |
| <b>290 - 400 mm</b><br>11,4 - 15,7 in | <b>+1800 Pa / -1800 Pa*</b><br>+1200 Pa / -1200 Pa | <b>+4200 Pa / -2400 Pa</b><br>+2800 Pa / -1600 Pa | <b>+5400 Pa / -2400 Pa</b><br>+3600 Pa / -1600 Pa |
| <b>400 - 530 mm</b><br>15,7 - 20,9 in | <b>+1800 Pa / -1800 Pa*</b><br>+1200 Pa / -1200 Pa | <b>+6200 Pa / -4000 Pa</b><br>+4133 Pa / -2666 Pa | <b>+7000 Pa / -4000 Pa</b><br>+4666 Pa / -2666 Pa |
| <b>530 - 590 mm</b><br>20,9 - 23,2 in | <b>+1200 Pa / -1200 Pa*</b><br>+800 Pa / -800 Pa   | <b>+3000 Pa / -2400 Pa</b><br>+2000 Pa / -1600 Pa | <b>+5400 Pa / -2400 Pa</b><br>+3600 Pa / -1600 Pa |
| <b>590 - 700 mm</b><br>23,2 - 27,6 in | <b>+2400 Pa / -2400 Pa</b><br>+1600 Pa / -1600 Pa  | <b>+2400 Pa / -2400 Pa</b><br>+1600 Pa / -1600 Pa | <b>+2400 Pa / -2400 Pa</b><br>+1600 Pa / -1600 Pa |



Long Side Mounting



Short Side Mounting



Once a module is secured in each of the 4 zones, additional clamps, i.e.,  $\geq 5$ , may be freely located on panel frame without affecting the warranty. Loads marked with a \* were not certified as part of IEC 61215/61730 testing; these have been evaluated by REC's internal testing process.



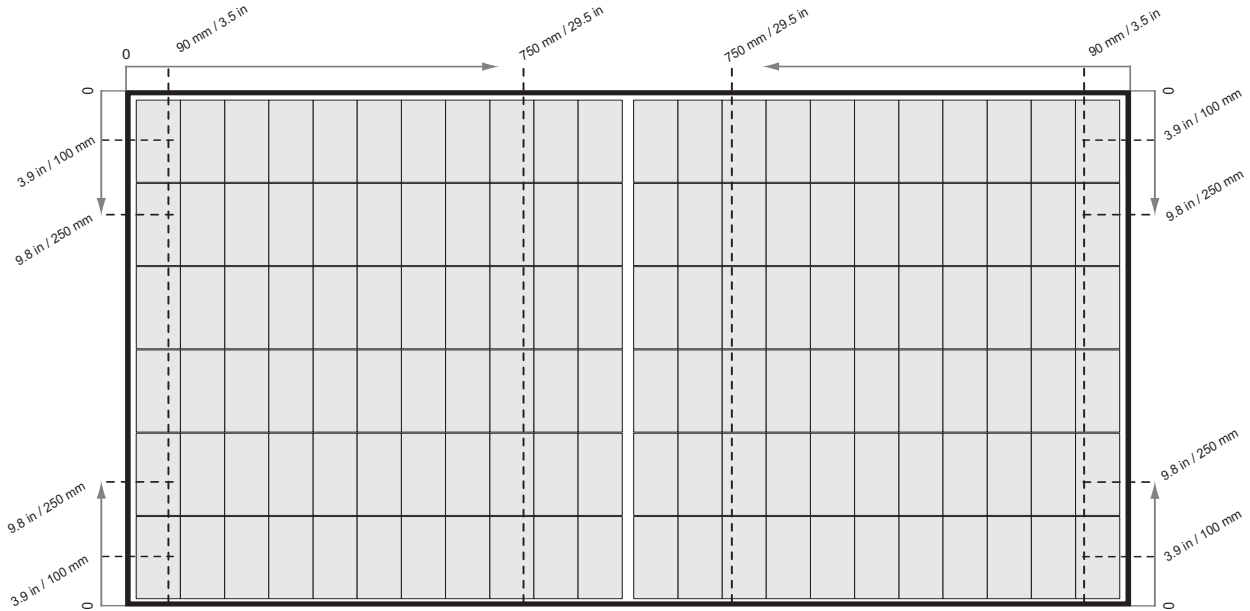
### CAUTION

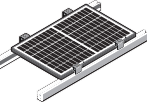
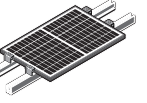
The center point of each clamp and the minimum grip length must be fully located in the same clamping zones to be rated to that load. If the panel is secured in zones with different load values, it is rated to the lowest load value only.

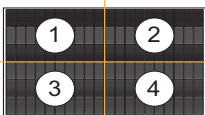
## MOUNTING REC ALPHA PURE 2 SERIES PANELS WITH CONTINUOUS RAILS PARALLEL TO LONG SIDE OF THE PANEL

A continuous rail (or other support structure) spans the complete underside of the panel

Fig. 2-2 Clamping of REC Alpha Pure 2 panels with Rails parallel to the Long Side of the Panel



|  | <b>Clearance Gap</b>                | <b>20 - 40 mm</b><br>0,8 - 1,6 in                | <b>40 - 60 mm</b><br>1,6 - 2,4 in                 | <b>&gt;60 mm</b><br>>2,4 in                        |
|--|-------------------------------------|--|---|--|
|  | <b>Clamping Zone</b>                | <b>Test Load</b><br>Design Load                  | <b>Test Load</b><br>Design Load                   | <b>Test Load</b><br>Design Load                    |
| <br>Long Side Mounting  | <b>90 - 750 mm</b><br>3,5 - 29,5 in | <b>+1200 Pa / -1200 Pa*</b><br>+800 Pa / -800 Pa | <b>+2400 Pa / -2400 Pa</b><br>+1600 Pa / -1600 Pa | <b>+2400 Pa / -2400 Pa</b><br>+1600 Pa / -1600 Pa  |
| <br>Short Side Mounting | <b>0 - 100 mm</b><br>0,0 - 3,9 in   | -  | <b>+1200 Pa / -1200 Pa*</b><br>+800 Pa / -800 Pa  | <b>+1600 Pa / -1600 Pa*</b><br>+1066 Pa / -1066 Pa |
|  | <b>100 - 250 mm</b><br>3,9 - 9,8 in | -  | <b>+800 Pa / -800 Pa*</b><br>+533 Pa / -533 Pa    | <b>+2400 Pa / -2400 Pa</b><br>+1600 Pa / -1600 Pa  |



Once a module is secured in each of the 4 zones, additional clamps, i.e.,  $\geq 5$ , may be freely located on panel frame without affecting the warranty. Loads marked with a \* were not certified as part of IEC 61215/61730 testing; these have been evaluated by REC's internal testing process.



### CAUTION

The center point of each clamp and the minimum grip length must be fully located in the same clamping zones to be rated to that load. If the panel is secured in zones with different load values, it is rated to the lowest load value only.



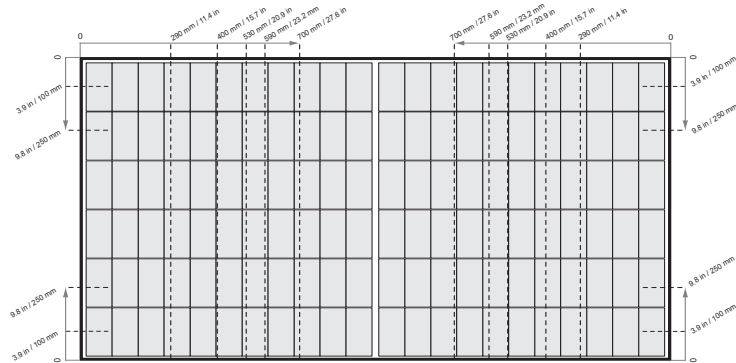
### NOTE

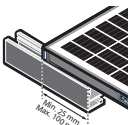
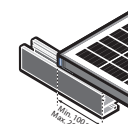
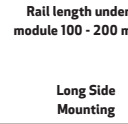
Short-side mounting with continuous rails parallel to the panel's long side reduces snow and wind load capacity compared to long-side mounting. Increased flexing of panels during snow or wind events can cause potential contact between crossbar and rails. REC strongly recommends a thorough site assessment, including the maximum snowfall and wind conditions, before selecting this configuration

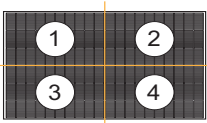
## MOUNTING REC ALPHA PURE 2 PANELS WITH SHORT RAILS

A short rail (or other short support structure) has a minimum length of 25 mm and does not span the complete underside of a panel.

Fig. 2-3 Clamping of REC Alpha Pure 2 panels using short rails



|   | Clearance Gap                  | 20 - 40 mm<br>0,8 - 1,6 in               | 40 - 60 mm<br>1,6 - 2,4 in                 | >60 mm<br>>2,4 in                           |
|---|--------------------------------|--|--|---|
|   | Clamping Zone                  | Test Load<br>Design Load                 | Test Load<br>Design Load                   | Test Load<br>Design Load                    |
|  <p>Rail length under module 25 - 100 mm</p> <p>Long Side Mounting</p>    | 90 - 270 mm<br>3,5 - 10,6 in   | -  | +1200 Pa / -1200 Pa*<br>+800 Pa / -800 Pa  | +1600 Pa / -1600 Pa*<br>+1066 Pa / -1066 Pa |
|   | 270 - 390 mm<br>10,6 - 15,4 in | +1200 Pa / -1200 Pa<br>+800 Pa / -800 Pa | +2400 Pa / -2400 Pa<br>+1600 Pa / -1600 Pa | +3600 Pa / -2400 Pa<br>+2400 Pa / -1600 Pa  |
|   | 390 - 580 mm<br>15,4 - 22,8 in | +1200 Pa / -1200 Pa<br>+800 Pa / -800 Pa | +3000 Pa / -3000 Pa<br>+2000 Pa / -2000 Pa | +4200 Pa / -4000 Pa<br>+2800 Pa / -2666 Pa  |
|   | 580 - 640 mm<br>22,8 - 25,2 in | +1200 Pa / -1200 Pa<br>+800 Pa / -800 Pa | +2400 Pa / -2400 Pa<br>+1600 Pa / -1600 Pa | +3600 Pa / -2400 Pa<br>+2400 Pa / -1600 Pa  |
|   | 640 - 750 mm<br>25,2 - 29,5 in | +1200 Pa / -1200 Pa<br>+800 Pa / -800 Pa | +2400 Pa / -2400 Pa<br>+1600 Pa / -1600 Pa | +2400 Pa / -2400 Pa<br>+1600 Pa / -1600 Pa  |
|  <p>Rail length under module 100 - 200 mm</p> <p>Short Side Mounting</p> | 0 - 100 mm<br>0,0 - 3,9 in     | -  | +1200 Pa / -1200 Pa<br>+800 Pa / -800 Pa   | +1600 Pa / -1600 Pa*<br>+1066 Pa / -1066 Pa |
|   | 100 - 250 mm<br>3,9 - 9,8 in   | -  | +800 Pa / -800 Pa<br>+533 Pa / -533 Pa     | +2400 Pa / -2400 Pa<br>+1600 Pa / -1600 Pa  |
|   | 90 - 270 mm<br>3,5 - 10,6 in   | -  | +1200 Pa / -1200 Pa*<br>+800 Pa / -800 Pa  | +1600 Pa / -1600 Pa*<br>+1066 Pa / -1066 Pa |
|   | 270 - 390 mm<br>10,6 - 15,4 in | +1200 Pa / -1200 Pa<br>+800 Pa / -800 Pa | +2400 Pa / -2400 Pa<br>+1600 Pa / -1600 Pa | +3600 Pa / -2400 Pa<br>+2400 Pa / -1600 Pa  |
|   | 390 - 580 mm<br>15,4 - 22,8 in | +1200 Pa / -1200 Pa<br>+800 Pa / -800 Pa | +3000 Pa / -3000 Pa<br>+2000 Pa / -2000 Pa | +3000 Pa / -3000 Pa<br>+2000 Pa / -2000 Pa  |
|  <p>Rail length under module 100 - 200 mm</p> <p>Long Side Mounting</p>  | 580 - 640 mm<br>22,8 - 25,2 in | +1200 Pa / -1200 Pa<br>+800 Pa / -800 Pa | +2400 Pa / -2400 Pa<br>+1600 Pa / -1600 Pa | +3600 Pa / -2400 Pa<br>+2400 Pa / -1600 Pa  |
|   | 640 - 750 mm<br>25,2 - 29,5 in | +1200 Pa / -1200 Pa<br>+800 Pa / -800 Pa | +2400 Pa / -2400 Pa<br>+1600 Pa / -1600 Pa | +3000 Pa / -2400 Pa<br>+2000 Pa / -1600 Pa  |
|   | 0 - 100 mm<br>0,0 - 3,9 in     | -  | +1200 Pa / -1200 Pa*<br>+800 Pa / -800 Pa  | +1600 Pa / -1600 Pa*<br>+1066 Pa / -1066 Pa |
|   | 100 - 250 mm<br>3,9 - 9,8 in   | -  | +800 Pa / -800 Pa*<br>+533 Pa / -533 Pa    | +2400 Pa / -2400 Pa<br>+1600 Pa / -1600 Pa  |



Once a module is secured in each of the 4 zones, additional clamps, i.e.,  $\geq 5$ , may be freely located on panel frame without affecting the warranty. Loads marked with a \* were not certified as part of IEC 61215/61730 testing; these have been evaluated by REC's internal testing process.

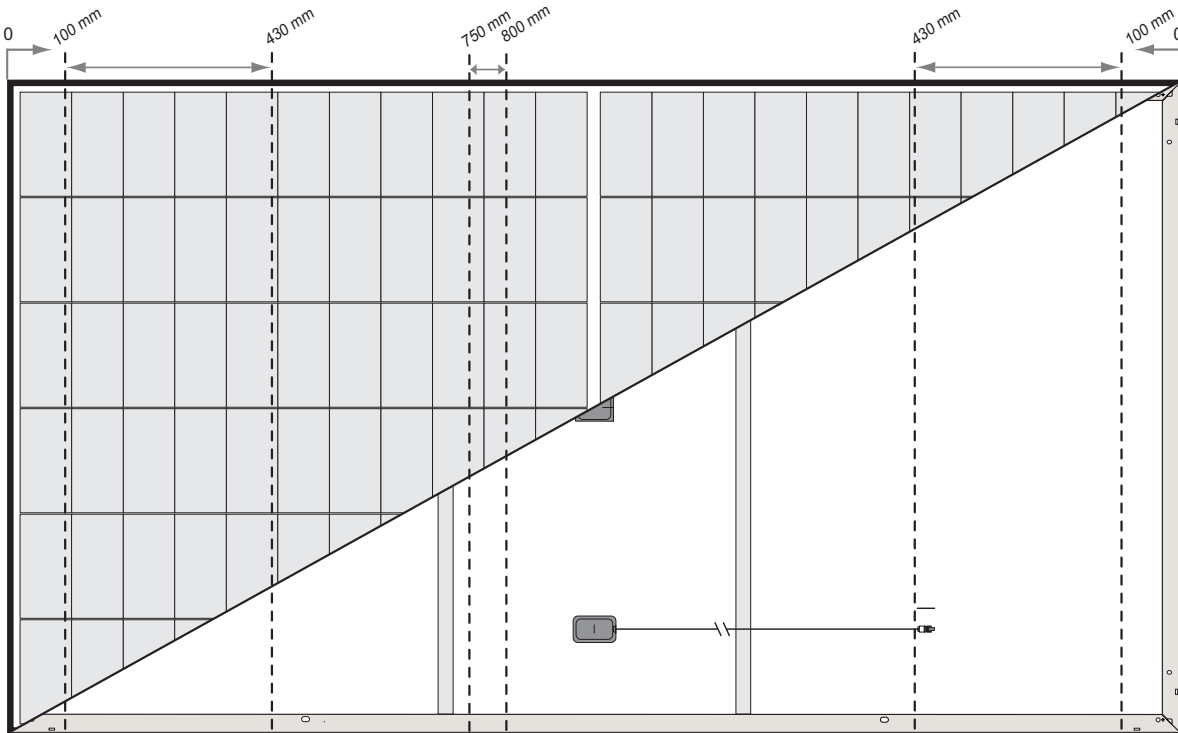
 CAUTION

The center point of each clamp and the minimum grip length must be fully located in the same clamping zones to be rated to that load. If the panel is secured in zones with different load values, it is rated to the lowest load value only.

## SIX POINT MOUNTING: REC ALPHA PURE 2

A six-point mounting configuration secures the panel on three continuous rails (or other support structures) with three clamps on each side of the panel in the zones marked below:

Fig. 2-4 Six-point mounting configuration clamping zones: REC Alpha Pure 2



| Clearance Gap | 20 - 40 mm<br>0,8 - 1,6 in | 40 - 60 mm<br>1,6 - 2,4 in | >60 mm<br>>2,4 in        |
|---------------|----------------------------|----------------------------|--------------------------|
| Clamping Zone | Test Load<br>Design Load   | Test Load<br>Design Load   | Test Load<br>Design Load |



**100 - 430 mm**  
3,9 - 16,9 in

**+2000 Pa / -2000 Pa\***  
+1333 Pa / -1333 Pa

**+6300 Pa / -6000 Pa\***  
+4200 Pa / -4000 Pa

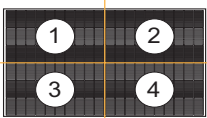
**+8000 Pa / -6000 Pa\***  
+5333 Pa / -4000 Pa

**750 - 800 mm**  
29,5 - 31,5 in

**+2000 Pa / -2000 Pa\***  
+1333 Pa / -1333 Pa

**+6300 Pa / -6000 Pa\***  
+4200 Pa / -4000 Pa

**+8000 Pa / -6000 Pa\***  
+5333 Pa / -4000 Pa



Once a module is secured in each of the 4 zones, additional clamps, i.e.,  $\geq 5$ , may be freely located on panel frame without affecting the warranty. Loads marked with a \* were not certified as part of IEC 61215/61730 testing; these have been evaluated by REC's internal testing process.

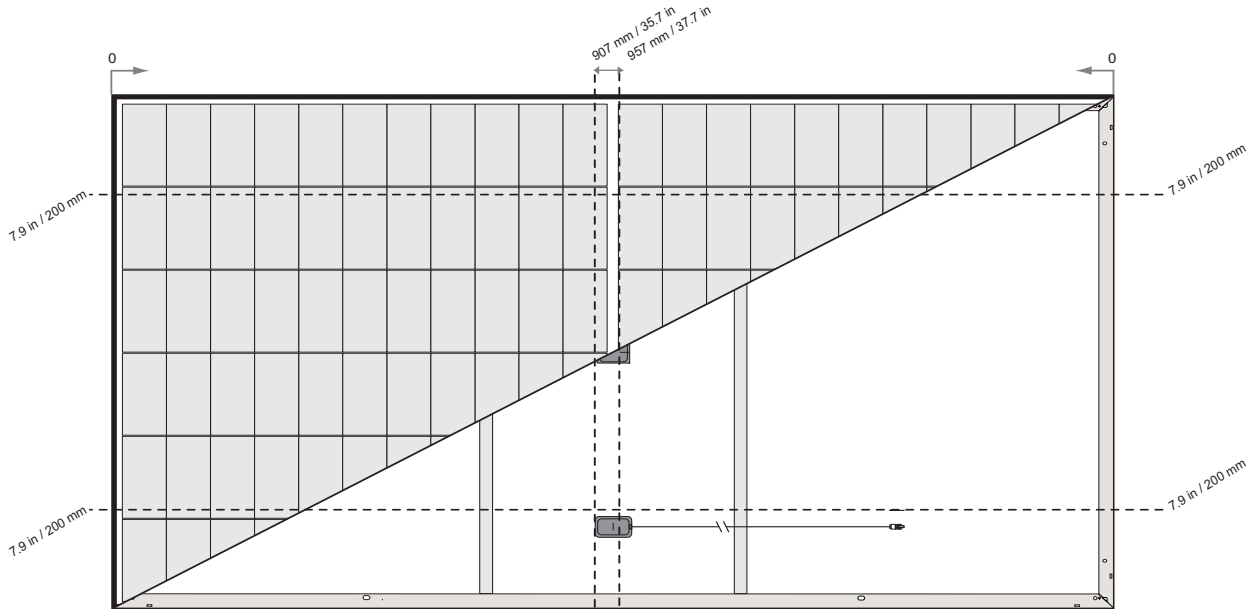
### CAUTION

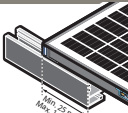
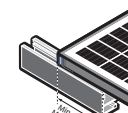
- The middle rail must not be installed on the side of the junction box where the cables exit.
- A total of three continuous rails (or other support structures) must be used to secure the panel.
- The center point of each clamp and the minimum grip length must be fully located within the marked zone to be rated to the given value.

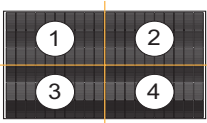
## MIXED SIX-POINT MOUNTING FOR SHORT RAILS: REC ALPHA PURE 2

A mixed six-point mounting configuration secures the panel on three short rails (or other support structures) with three clamps on each side of the panel in the zones marked below:

Fig. 2-5 Mixed Six-Point Mounting of REC Alpha Pure 2 Series Panels using short rails



|  | Clearance Gap                  | 20 - 40 mm<br>0,8 - 1,6 in | 40 - 60 mm<br>1,6 - 2,4 in | >60 mm<br>>2,4 in                           |
|--|--------------------------------|----------------------------|----------------------------|---|
|  | Clamping Zone                  | Test Load<br>Design Load   | Test Load<br>Design Load   | Test Load<br>Design Load                    |
| <br>Rail length under<br>module 25 - 100 mm<br><br>Long Side<br>Mounting<br><br>Short Side<br>Mounting  | 0 - 200 mm<br>0,0 - 7,9 in     | -                          | -                          | +2400 Pa / -2400 Pa*<br>+1600 Pa / -1600 Pa |
|  | 907 - 957 mm<br>35,7 - 37,7 in | -                          | -                          | +2400 Pa / -2400 Pa*<br>+1600 Pa / -1600 Pa |
| <br>Rail length under<br>module 100 - 200 mm<br><br>Long Side<br>Mounting<br><br>Short Side<br>Mounting | 0 - 200 mm<br>0,0 - 7,9 in     | -                          | -                          | +2400 Pa / -2400 Pa*<br>+1600 Pa / -1600 Pa |
|  | 907 - 957 mm<br>35,7 - 37,7 in | -                          | -                          | +2400 Pa / -2400 Pa*<br>+1600 Pa / -1600 Pa |



Once a module is secured in each of the 4 zones, additional clamps, i.e.,  $\geq 5$ , may be freely located on panel frame without affecting the warranty. Loads marked with a \* were not certified as part of IEC 61215/61730 testing; these have been evaluated by REC's internal testing process.

### ⚠ CAUTION

- The middle rail must not be installed on the side of the junction box where the cables exit.
- A total of three continuous rails (or other support structures) must be used to secure the panel.
- The center point of each clamp and the minimum grip length must be fully located within the marked zone to be rated to the given value.

# INSTALLATION OF REC ALPHA PURE-R SERIES PANELS



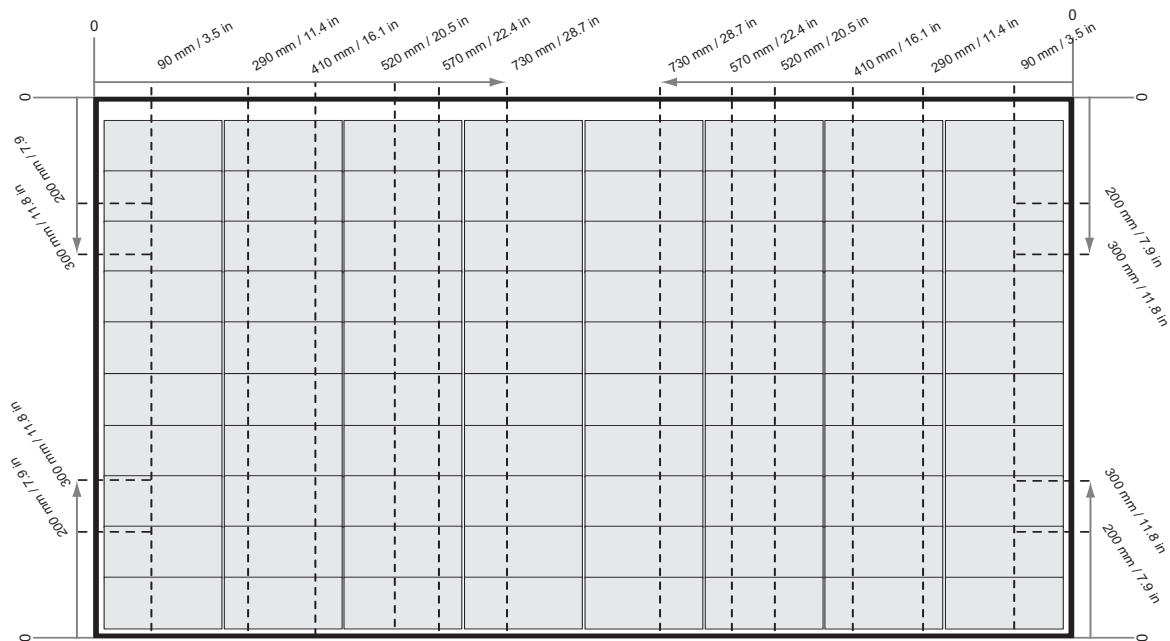
INCLUDES THE FOLLOWING PRODUCT CODES:  
RECXXXAA PURE-R

# INSTALLATION OF REC ALPHA PURE-R SERIES PANELS

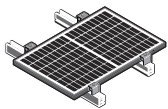
## MOUNTING REC ALPHA PURE-R SERIES PANELS WITH CONTINUOUS RAILS PARALLEL TO SHORT SIDE OF THE PANEL

A continuous rail (or other support structure) spans the complete underside of the panel

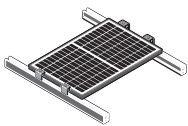
Fig. 3-1 Clamping of REC Alpha Pure-R panels with Rails parallel to the Short Side of the Panel



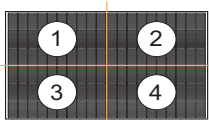
| Clearance Gap                         | 20 - 40 mm<br>0,8 - 1,6 in                         | 40 - 60 mm<br>1,6 - 2,4 in                        | >60 mm<br>>2,4 in                                 |
|---------------------------------------|--|---|---|
| <b>Clamping Zone</b>                  | <b>Test Load</b><br>Design Load                    | <b>Test Load</b><br>Design Load                   | <b>Test Load</b><br>Design Load                   |
| <b>90 - 290 mm</b><br>3,5 - 11,4 in   | -  | <b>+1200 Pa / -1200 Pa*</b><br>+800 Pa / -800 Pa  | <b>+2400 Pa / -2400 Pa</b><br>+1600 Pa / -1600 Pa |
| <b>290 - 410 mm</b><br>11,4 - 16,1 in | <b>+1800 Pa / -1800 Pa*</b><br>+1200 Pa / -1200 Pa | <b>+4200 Pa / -2400 Pa</b><br>+2800 Pa / -1600 Pa | <b>+5400 Pa / -2400 Pa</b><br>+3600 Pa / -1600 Pa |
| <b>410 - 520 mm</b><br>16,1 - 20,5 in | <b>+1800 Pa / -1800 Pa*</b><br>+1200 Pa / -1200 Pa | <b>+6200 Pa / -3000 Pa</b><br>+4133 Pa / -2000 Pa | <b>+7000 Pa / -4000 Pa</b><br>+4666 Pa / -2666 Pa |
| <b>520 - 570 mm</b><br>20,5 - 22,4 in | <b>+1200 Pa / -1200 Pa*</b><br>+800 Pa / -800 Pa   | <b>+3000 Pa / -2400 Pa</b><br>+2000 Pa / -1600 Pa | <b>+5400 Pa / -2400 Pa</b><br>+3600 Pa / -1600 Pa |
| <b>570 - 730 mm</b><br>22,4 - 28,7 in | <b>+1200 Pa / -1200 Pa*</b><br>+800 Pa / -800 Pa   | <b>+2400 Pa / -2400 Pa</b><br>+1600 Pa / -1600 Pa | <b>+2400 Pa / -2400 Pa</b><br>+1600 Pa / -1600 Pa |



Long Side Mounting



Short Side Mounting



Once a module is secured in each of the 4 zones, additional clamps, i.e.,  $\geq 5$ , may be freely located on panel frame without affecting the warranty. Loads marked with a \* were not certified as part of IEC 61215/61730 testing; these have been evaluated by REC's internal testing process.



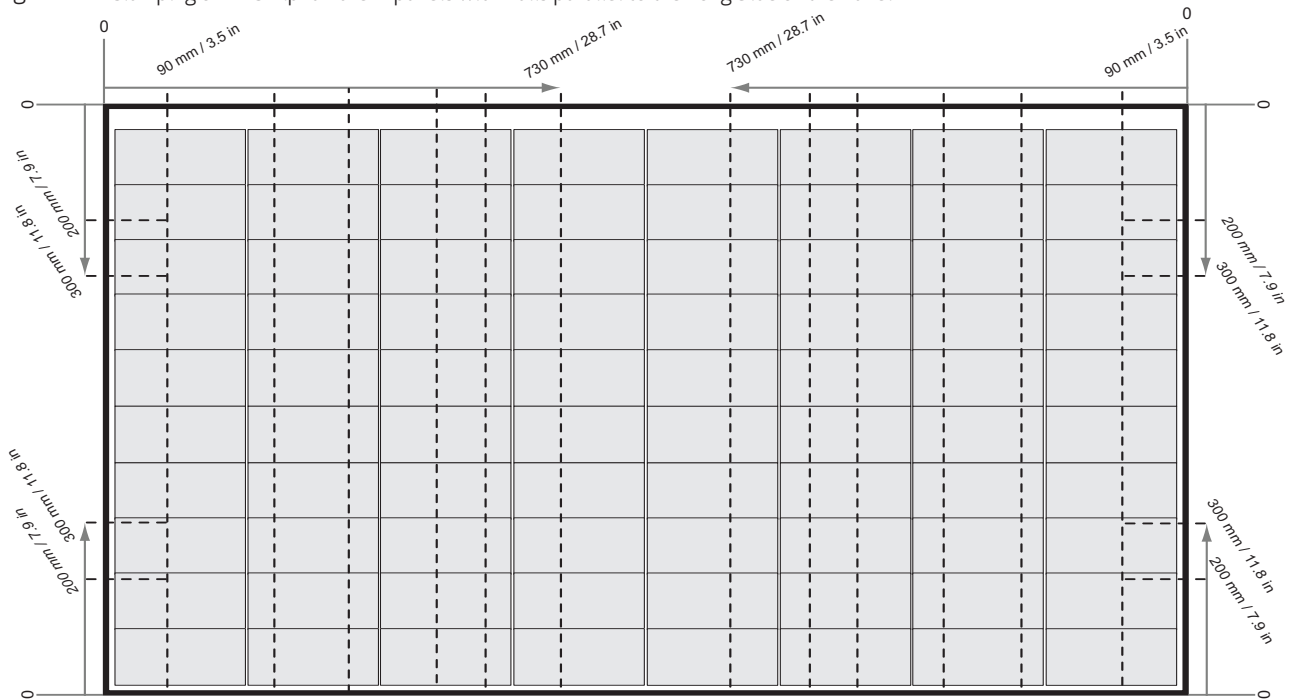
### CAUTION

The center point of each clamp and the minimum grip length must be fully located in the same clamping zones to be rated to that load. If the panel is secured in zones with different load values, it is rated to the lowest load value only.

## MOUNTING REC ALPHA PURE-R SERIES PANELS WITH CONTINUOUS RAILS PARALLEL TO LONG SIDE OF THE PANEL

A continuous rail (or other support structure) spans the complete underside of the panel

Fig. 3-2 Clamping of REC Alpha Pure-R panels with Rails parallel to the Long Side of the Panel



| Clearance Gap | 20 - 40 mm<br>0,8 - 1,6 in      | 40 - 60 mm<br>1,6 - 2,4 in      | >60 mm<br>>2,4 in               |
|---------------|---------------------------------|---------------------------------|---------------------------------|
| Clamping Zone | <b>Test Load</b><br>Design Load | <b>Test Load</b><br>Design Load | <b>Test Load</b><br>Design Load |



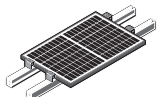
Long Side Mounting

**90 - 730 mm**  
3,5 - 28,7 in

**+1200 Pa / -1200 Pa\***  
+800 Pa / -800 Pa

**+1600 Pa / -1600 Pa\***  
+1066 Pa / -1066 Pa

**+2400 Pa / -2400 Pa**  
+1600 Pa / -1600 Pa



Short Side Mounting

**0 - 200 mm**  
0,0 - 7,9 in

-

**+1200 Pa / -1200 Pa\***  
+800 Pa / -800 Pa

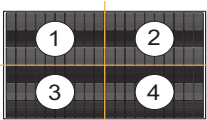
**+1600 Pa / -1600 Pa\***  
+1066 Pa / -1066 Pa

**200 - 300 mm**  
7,9 - 11,8 in

-

**+800 Pa / -800 Pa\***  
+533 Pa / -533 Pa

**+2400 Pa / -2400 Pa**  
+1600 Pa / -1600 Pa



Once a module is secured in each of the 4 zones, additional clamps, i.e.,  $\geq 5$ , may be freely located on panel frame without affecting the warranty. Loads marked with a \* were not certified as part of IEC 61215/61730 testing; these have been evaluated by REC's internal testing process.



### CAUTION

The center point of each clamp and the minimum grip length must be fully located in the same clamping zones to be rated to that load. If the panel is secured in zones with different load values, it is rated to the lowest load value only.



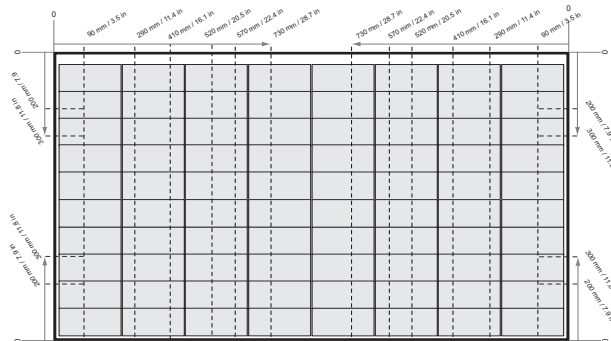
### NOTE

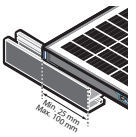
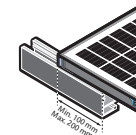
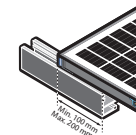
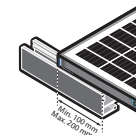
Short-side mounting with continuous rails parallel to the panel's long side reduces snow and wind load capacity compared to long-side mounting. Increased flexing of panels during snow or wind events can cause potential contact between crossbar and rails. REC strongly recommends a thorough site assessment, including the maximum snowfall and wind conditions, before selecting this configuration

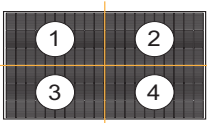
## MOUNTING REC ALPHA PURE-R PANELS WITH SHORT RAILS

A short rail (or other short support structure) has a minimum length of 25 mm and does not span the complete underside of a panel.

Fig. 3-3 Clamping of REC Alpha Pure-R panels using short rails



|  | Clearance Gap                  | 20 - 40 mm<br>0,8 - 1,6 in                       | 40 - 60 mm<br>1,6 - 2,4 in                         | >60 mm<br>>2,4 in                                  |
|--|--------------------------------|--|--|--|
|  | Clamping Zone                  | Test Load<br>Design Load                         | Test Load<br>Design Load                           | Test Load<br>Design Load                           |
|  <p>Rail length under module 25 - 100 mm</p>   | 90 - 290 mm<br>3,5 - 11,4 in   | -  | <b>+1600 Pa / -1600 Pa*</b><br>+1066 Pa / -1066 Pa | <b>+2400 Pa / -2400 Pa</b><br>+1600 Pa / -1600 Pa  |
|  | 290 - 410 mm<br>11,4 - 16,1 in | <b>+1200 Pa / -1200 Pa*</b><br>+800 Pa / -800 Pa | <b>+2400 Pa / -2400 Pa</b><br>+1600 Pa / -1600 Pa  | <b>+3000 Pa / -3000 Pa</b><br>+2000 Pa / -2000 Pa  |
|  | 410 - 520 mm<br>16,1 - 20,5 in | <b>+1200 Pa / -1200 Pa*</b><br>+800 Pa / -800 Pa | <b>+1600 Pa / -1600 Pa*</b><br>+1066 Pa / -1066 Pa | <b>+2400 Pa / -2400 Pa</b><br>+1600 Pa / -1600 Pa  |
|  | 520 - 570 mm<br>20,5 - 22,4 in | <b>+1200 Pa / -1200 Pa*</b><br>+800 Pa / -800 Pa | <b>+2400 Pa / -2400 Pa</b><br>+1600 Pa / -1600 Pa  | <b>+3600 Pa / -2400 Pa</b><br>+2400 Pa / -1600 Pa  |
|  | 570 - 730 mm<br>22,4 - 28,7 in | <b>+1200 Pa / -1200 Pa*</b><br>+800 Pa / -800 Pa | <b>+1600 Pa / -1600 Pa*</b><br>+1066 Pa / -1066 Pa | <b>+2400 Pa / -2400 Pa</b><br>+1600 Pa / -1600 Pa  |
|  <p>Rail length under module 100 - 200 mm</p> | 0 - 200 mm<br>0,0 - 7,9 in     | -  | <b>+800 Pa / -800 Pa*</b><br>+533 Pa / -533 Pa     | <b>+800 Pa / -800 Pa*</b><br>+533 Pa / -533 Pa     |
|  | 200 - 300 mm<br>7,9 - 11,8 in  | -  | <b>+800 Pa / -800 Pa*</b><br>+533 Pa / -533 Pa     | <b>+1600 Pa / -1600 Pa*</b><br>+1066 Pa / -1066 Pa |
|  <p>Rail length under module 100 - 200 mm</p> | 90 - 290 mm<br>3,5 - 11,4 in   | -  | <b>+1200 Pa / -1200 Pa*</b><br>+800 Pa / -800 Pa   | <b>+1600 Pa / -1600 Pa*</b><br>+1066 Pa / -1066 Pa |
|  | 290 - 410 mm<br>11,4 - 16,1 in | <b>+1200 Pa / -1200 Pa*</b><br>+800 Pa / -800 Pa | <b>+1600 Pa / -1600 Pa*</b><br>+1066 Pa / -1066 Pa | <b>+2400 Pa / -2400 Pa</b><br>+1600 Pa / -1600 Pa  |
|  | 410 - 520 mm<br>16,1 - 20,5 in | <b>+1200 Pa / -1200 Pa*</b><br>+800 Pa / -800 Pa | <b>+2400 Pa / -2400 Pa</b><br>+1600 Pa / -1600 Pa  | <b>+3000 Pa / -3000 Pa</b><br>+2000 Pa / -2000 Pa  |
|  | 520 - 570 mm<br>20,5 - 22,4 in | <b>+1200 Pa / -1200 Pa*</b><br>+800 Pa / -800 Pa | <b>+1600 Pa / -1600 Pa*</b><br>+1066 Pa / -1066 Pa | <b>+2400 Pa / -2400 Pa</b><br>+1600 Pa / -1600 Pa  |
|  | 570 - 730 mm<br>22,4 - 28,7 in | <b>+1200 Pa / -1200 Pa*</b><br>+800 Pa / -800 Pa | <b>+1600 Pa / -1600 Pa*</b><br>+1066 Pa / -1066 Pa | <b>+2400 Pa / -2400 Pa</b><br>+1600 Pa / -1600 Pa  |
|  <p>Rail length under module 100 - 200 mm</p> | 0 - 200 mm<br>0,0 - 7,9 in     | -  | <b>+800 Pa / -800 Pa*</b><br>+533 Pa / -533 Pa     | <b>+800 Pa / -800 Pa*</b><br>+533 Pa / -533 Pa     |
|  | 200 - 300 mm<br>7,9 - 11,8 in  | -  | <b>+800 Pa / -800 Pa*</b><br>+533 Pa / -533 Pa     | <b>+1600 Pa / -1600 Pa*</b><br>+1066 Pa / -1066 Pa |



Once a module is secured in each of the 4 zones, additional clamps, i.e.,  $\geq 5$ , may be freely located on panel frame without affecting the warranty. Loads marked with a \* were not certified as part of IEC 61215/61730 testing; these have been evaluated by REC's internal testing process.



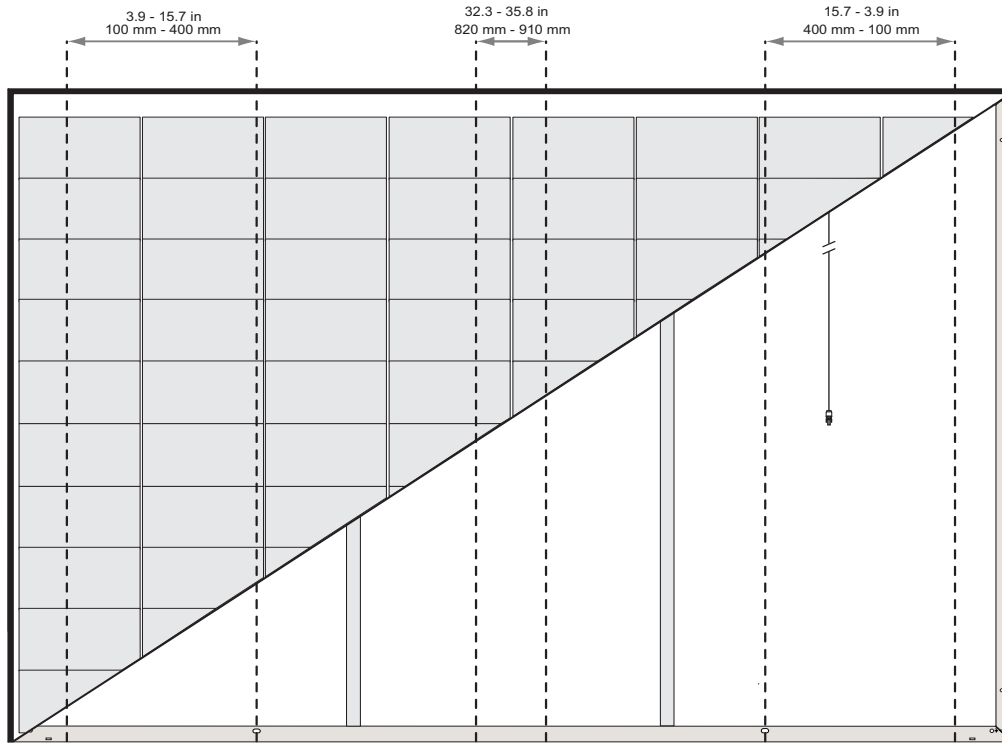
### CAUTION

The center point of each clamp and the minimum grip length must be fully located in the same clamping zones to be rated to that load. If the panel is secured in zones with different load values, it is rated to the lowest load value only.

## SIX POINT MOUNTING: REC ALPHA PURE-R

A six-point mounting configuration secures the panel on three continuous rails (or other support structures) with three clamps on each side of the panel in the zones marked below:

Fig. 3-4 Six-point mounting configuration clamping zones: REC Alpha Pure-R



| Clearance Gap | 20 - 40 mm<br>0,8 - 1,6 in      | 40 - 60 mm<br>1,6 - 2,4 in      | >60 mm<br>>2,4 in               |
|---------------|---------------------------------|---------------------------------|---------------------------------|
| Clamping Zone | <b>Test Load</b><br>Design Load | <b>Test Load</b><br>Design Load | <b>Test Load</b><br>Design Load |



**100 - 400 mm**  
3,9 - 15,7 in

**+2000 Pa / -2000 Pa\***  
+1333 Pa / -1333 Pa

**+6300 Pa / -6000 Pa\***  
+4200 Pa / -4000 Pa

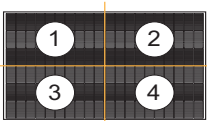
**+8000 Pa / -6000 Pa\***  
+5333 Pa / -4000 Pa

**820 - 910 mm**  
32,3 - 35,8 in

**+2000 Pa / -2000 Pa\***  
+1333 Pa / -1333 Pa

**+6300 Pa / -6000 Pa\***  
+4200 Pa / -4000 Pa

**+8000 Pa / -6000 Pa\***  
+5333 Pa / -4000 Pa



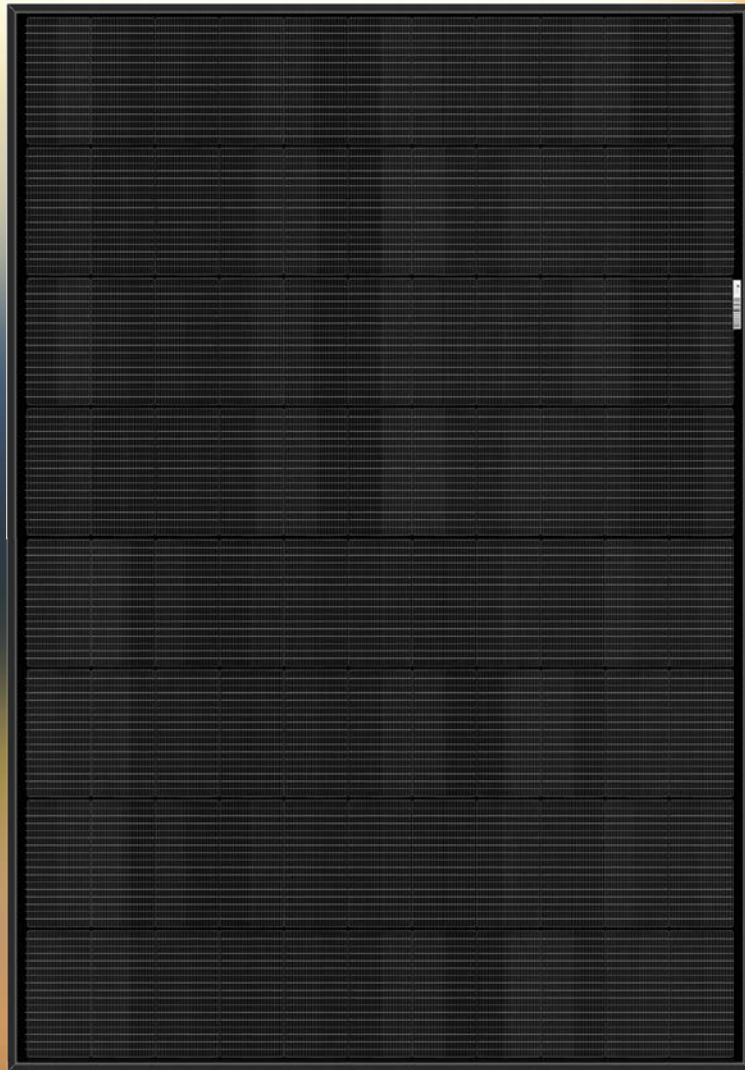
Once a module is secured in each of the 4 zones, additional clamps, i.e.,  $\geq 5$ , may be freely located on panel frame without affecting the warranty. Loads marked with a \* were not certified as part of IEC 61215/61730 testing; these have been evaluated by REC's internal testing process.



### CAUTION

- The middle rail must not be installed on the side of the junction box where the cables exit.
- A total of three continuous rails (or other support structures) must be used to secure the panel.
- The center point of each clamp and the minimum grip length must be fully located within the marked zone to be rated to the given value.

# INSTALLATION OF REC ALPHA PURE-RX SERIES PANELS



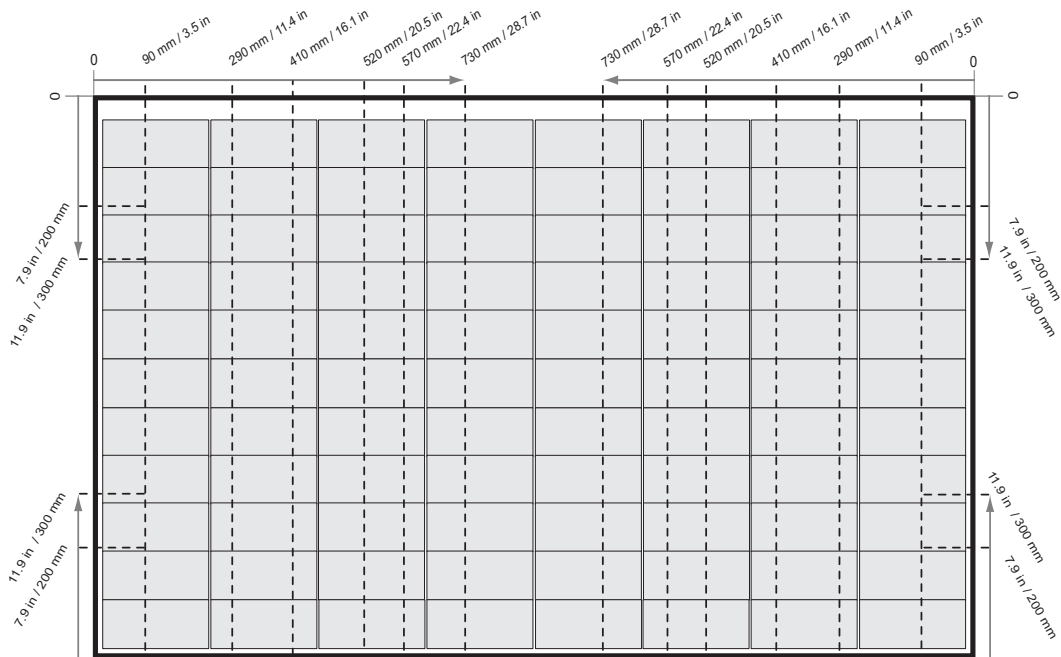
INCLUDES THE FOLLOWING PRODUCT CODES:  
RECXXXAA PURE-RX; RECXXXAA PURE-RX-DC

# INSTALLATION OF REC ALPHA PURE-RX SERIES PANELS

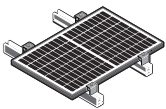
## MOUNTING REC ALPHA PURE-RX SERIES PANELS WITH CONTINUOUS RAILS PARALLEL TO SHORT SIDE OF THE PANEL

A continuous rail (or other support structure) spans the complete underside of the panel

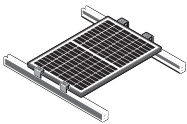
Fig. 4-1 Clamping of REC Alpha Pure-RX panels with Rails parallel to the Short Side of the Panel



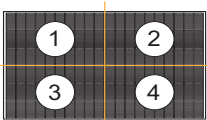
| Clearance Gap                         | 20 - 40 mm<br>0,8 - 1,6 in                         | 40 - 60 mm<br>1,6 - 2,4 in                        | >60 mm<br>>2,4 in                                 |
|---------------------------------------|--|---|---|
| <b>Clamping Zone</b>                  | <b>Test Load</b><br>Design Load                    | <b>Test Load</b><br>Design Load                   | <b>Test Load</b><br>Design Load                   |
| <b>90 - 290 mm</b><br>3,5 - 11,4 in   | -  | <b>+1200 Pa / -1200 Pa*</b><br>+800 Pa / -800 Pa  | <b>+2400 Pa / -2400 Pa</b><br>+1600 Pa / -1600 Pa |
| <b>290 - 410 mm</b><br>11,4 - 16,1 in | <b>+1800 Pa / -1800 Pa*</b><br>+1200 Pa / -1200 Pa | <b>+4200 Pa / -2400 Pa</b><br>+2800 Pa / -1600 Pa | <b>+5400 Pa / -2400 Pa</b><br>+3600 Pa / -1600 Pa |
| <b>410 - 520 mm</b><br>16,1 - 20,5 in | <b>+1800 Pa / -1800 Pa*</b><br>+1200 Pa / -1200 Pa | <b>+6200 Pa / -3000 Pa</b><br>+3000 Pa / -2000 Pa | <b>+7000 Pa / -4000 Pa</b><br>+4666 Pa / -2666 Pa |
| <b>520 - 570 mm</b><br>20,5 - 22,4 in | <b>+1200 Pa / -1200 Pa*</b><br>+800 Pa / -800 Pa   | <b>+3000 Pa / -2400 Pa</b><br>+2000 Pa / -1600 Pa | <b>+5400 Pa / -2400 Pa</b><br>+3600 Pa / -1600 Pa |
| <b>570 - 730 mm</b><br>22,4 - 28,7 in | <b>+1200 Pa / -1200 Pa*</b><br>+800 Pa / -800 Pa   | <b>+2400 Pa / -2400 Pa</b><br>+1600 Pa / -1600 Pa | <b>+2400 Pa / -2400 Pa</b><br>+1600 Pa / -1600 Pa |



Long Side Mounting



Short Side Mounting



Once a module is secured in each of the 4 zones, additional clamps, i.e.,  $\geq 5$ , may be freely located on panel frame without affecting the warranty. Loads marked with a \* were not certified as part of IEC 61215/61730 testing; these have been evaluated by REC's internal testing process.



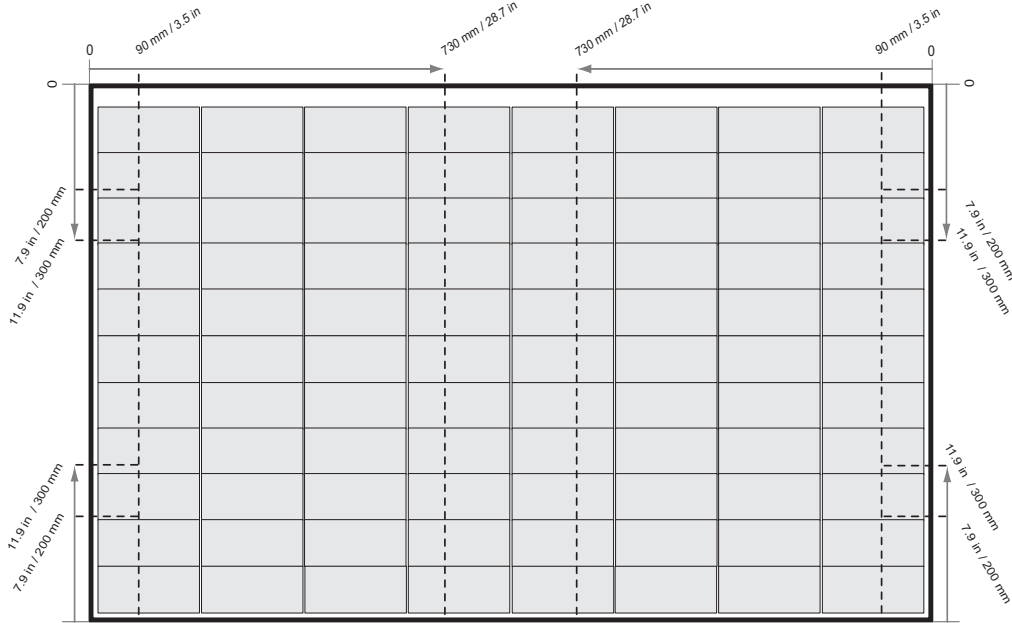
### CAUTION


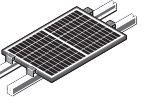
The center point of each clamp and the minimum grip length must be fully located in the same clamping zones to be rated to that load. If the panel is secured in zones with different load values, it is rated to the lowest load value only.

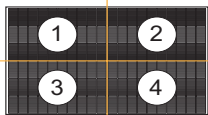
## MOUNTING REC ALPHA PURE-RX SERIES PANELS WITH CONTINUOUS RAILS PARALLEL TO LONG SIDE OF THE PANEL

A continuous rail (or other support structure) spans the complete underside of the panel

Fig. 4-2 Clamping of REC Alpha Pure-RX panels with Rails parallel to the Long Side of the Panel



|   | <b>Clearance Gap</b>                 | <b>20 - 40 mm</b><br>0,8 - 1,6 in                | <b>40 - 60 mm</b><br>1,6 - 2,4 in                  | <b>&gt;60 mm</b><br>>2,4 in                        |
|---|--------------------------------------|--|--|--|
|   | <b>Clamping Zone</b>                 | <b>Test Load</b><br>Design Load                  | <b>Test Load</b><br>Design Load                    | <b>Test Load</b><br>Design Load                    |
| <br><b>Long Side Mounting</b>  | <b>90 - 730 mm</b><br>3,5 - 28,7 in  | <b>+1200 Pa / -1200 Pa*</b><br>+800 Pa / -800 Pa | <b>+1600 Pa / -1600 Pa*</b><br>+1066 Pa / -1066 Pa | <b>+2400 Pa / -2400 Pa</b><br>+1600 Pa / -1600 Pa  |
|   | <b>0 - 200 mm</b><br>0,0 - 7,9 in    | -  | <b>+1200 Pa / -1200 Pa*</b><br>+800 Pa / -800 Pa   | <b>+1600 Pa / -1600 Pa*</b><br>+1066 Pa / -1066 Pa |
| <br><b>Short Side Mounting</b> | <b>200 - 300 mm</b><br>7,9 - 11,8 in | -  | <b>+800 Pa / -800 Pa*</b><br>+533 Pa / -533 Pa     | <b>+2400 Pa / -2400 Pa</b><br>+1600 Pa / -1600 Pa  |



Once a module is secured in each of the 4 zones, additional clamps, i.e.,  $\geq 5$ , may be freely located on panel frame without affecting the warranty. Loads marked with a \* were not certified as part of IEC 61215/61730 testing; these have been evaluated by REC's internal testing process.



### CAUTION

The center point of each clamp and the minimum grip length must be fully located in the same clamping zones to be rated to that load. If the panel is secured in zones with different load values, it is rated to the lowest load value only.



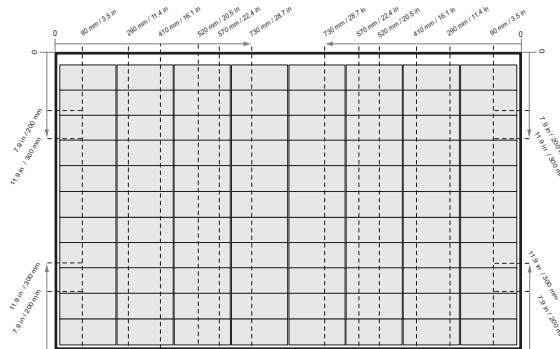
### NOTE

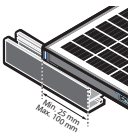

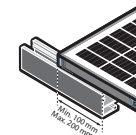
Short-side mounting with continuous rails parallel to the panel's long side reduces snow and wind load capacity compared to long-side mounting. Increased flexing of panels during snow or wind events can cause potential contact between crossbar and rails. REC strongly recommends a thorough site assessment, including the maximum snowfall and wind conditions, before selecting this configuration

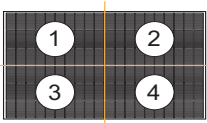
## MOUNTING REC ALPHA PURE-RX PANELS WITH SHORT RAILS

A short rail (or other short support structure) has a minimum length of 25 mm and does not span the complete underside of a panel.

Fig. 4-3 Clamping of REC Alpha Pure-RX panels using short rails



|  | Clearance Gap                  | 20 - 40 mm<br>0,8 - 1,6 in                       | 40 - 60 mm<br>1,6 - 2,4 in                         | >60 mm<br>>2,4 in                                  |
|--|--------------------------------|--|--|--|
|  | Clamping Zone                  | Test Load<br>Design Load                         | Test Load<br>Design Load                           | Test Load<br>Design Load                           |
|  <p>Rail length under module 25 - 100 mm</p> <p>Long Side Mounting</p>   | 90 - 290 mm<br>3,5 - 11,4 in   | -  | <b>+1600 Pa / -1600 Pa*</b><br>+1066 Pa / -1066 Pa | <b>+2400 Pa / -2400 Pa</b><br>+1600 Pa / -1600 Pa  |
|  | 290 - 410 mm<br>11,4 - 16,1 in | <b>+1200 Pa / -1200 Pa*</b><br>+800 Pa / -800 Pa | <b>+2400 Pa / -2400 Pa</b><br>+1600 Pa / -1600 Pa  | <b>+3000 Pa / -3000 Pa</b><br>+2000 Pa / -2000 Pa  |
|  | 410 - 520 mm<br>16,1 - 20,5 in | <b>+1200 Pa / -1200 Pa*</b><br>+800 Pa / -800 Pa | <b>+1600 Pa / -1600 Pa*</b><br>+1066 Pa / -1066 Pa | <b>+2400 Pa / -2400 Pa</b><br>+1600 Pa / -1600 Pa  |
|  | 520 - 570 mm<br>20,5 - 22,4 in | <b>+1200 Pa / -1200 Pa*</b><br>+800 Pa / -800 Pa | <b>+2400 Pa / -2400 Pa</b><br>+1600 Pa / -1600 Pa  | <b>+3600 Pa / -2400 Pa</b><br>+2400 Pa / -1600 Pa  |
|  | 570 - 730 mm<br>22,4 - 28,7 in | <b>+1200 Pa / -1200 Pa*</b><br>+800 Pa / -800 Pa | <b>+1600 Pa / -1600 Pa*</b><br>+1066 Pa / -1066 Pa | <b>+2400 Pa / -2400 Pa</b><br>+1600 Pa / -1600 Pa  |
|  <p>Short Side Mounting</p>   | 0 - 200 mm<br>0,0 - 7,9 in     | -  | <b>+800 Pa / -800 Pa*</b><br>+533 Pa / -533 Pa     | <b>+800 Pa / -800 Pa*</b><br>+533 Pa / -533 Pa     |
|  | 200 - 300 mm<br>7,9 - 11,8 in  | -  | <b>+800 Pa / -800 Pa*</b><br>+533 Pa / -533 Pa     | <b>+1600 Pa / -1600 Pa*</b><br>+1066 Pa / -1066 Pa |
|  <p>Rail length under module 100 - 200 mm</p> <p>Long Side Mounting</p> | 90 - 290 mm<br>3,5 - 11,4 in   | -  | <b>+1200 Pa / -1200 Pa*</b><br>+800 Pa / -800 Pa   | <b>+1600 Pa / -1600 Pa*</b><br>+1066 Pa / -1066 Pa |
|  | 290 - 410 mm<br>11,4 - 16,1 in | <b>+1200 Pa / -1200 Pa*</b><br>+800 Pa / -800 Pa | <b>+1600 Pa / -1600 Pa*</b><br>+1066 Pa / -1066 Pa | <b>+2400 Pa / -2400 Pa</b><br>+1600 Pa / -1600 Pa  |
|  | 410 - 520 mm<br>16,1 - 20,5 in | <b>+1200 Pa / -1200 Pa*</b><br>+800 Pa / -800 Pa | <b>+2400 Pa / -2400 Pa</b><br>+1600 Pa / -1600 Pa  | <b>+3000 Pa / -3000 Pa</b><br>+2000 Pa / -2000 Pa  |
|  | 520 - 570 mm<br>20,5 - 22,4 in | <b>+1200 Pa / -1200 Pa*</b><br>+800 Pa / -800 Pa | <b>+1600 Pa / -1600 Pa*</b><br>+1066 Pa / -1066 Pa | <b>+2400 Pa / -2400 Pa</b><br>+1600 Pa / -1600 Pa  |
| <p>Short Side Mounting</p>   | 0 - 200 mm<br>0,0 - 7,9 in     | -  | <b>+800 Pa / -800 Pa*</b><br>+533 Pa / -533 Pa     | <b>+800 Pa / -800 Pa*</b><br>+533 Pa / -533 Pa     |
|  | 200 - 300 mm<br>7,9 - 11,8 in  | -  | <b>+800 Pa / -800 Pa*</b><br>+533 Pa / -533 Pa     | <b>+1600 Pa / -1600 Pa*</b><br>+1066 Pa / -1066 Pa |



Once a module is secured in each of the 4 zones, additional clamps, i.e.,  $\geq 5$ , may be freely located on panel frame without affecting the warranty. Loads marked with a \* were not certified as part of IEC 61215/61730 testing; these have been evaluated by REC's internal testing process.

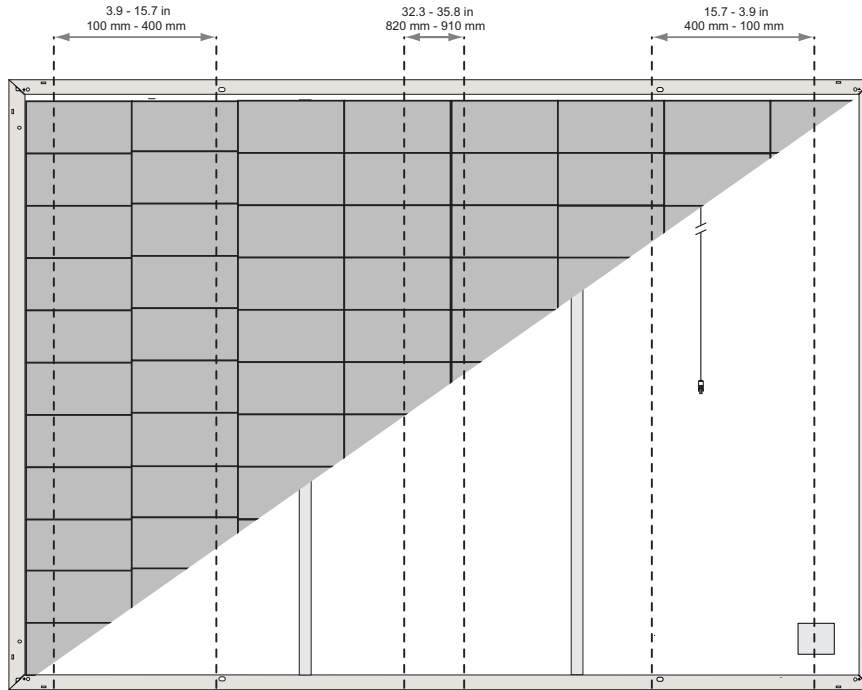
 CAUTION

The center point of each clamp and the minimum grip length must be fully located in the same clamping zones to be rated to that load. If the panel is secured in zones with different load values, it is rated to the lowest load value only.

## SIX POINT MOUNTING: REC ALPHA PURE-RX

A six-point mounting configuration secures the panel on three continuous rails (or other support structures) with three clamps on each side of the panel in the zones marked below:

Fig. 4-4 Six-point mounting configuration clamping zones: REC Alpha Pure-RX



| Clearance Gap | 20 - 40 mm<br>0,8 - 1,6 in | 40 - 60 mm<br>1,6 - 2,4 in | >60 mm<br>>2,4 in        |
|---------------|----------------------------|----------------------------|--------------------------|
| Clamping Zone | Test Load<br>Design Load   | Test Load<br>Design Load   | Test Load<br>Design Load |



**100 - 400 mm**  
3,9 - 15,7 in

**+2000 Pa / -2000 Pa\***  
+1333 Pa / -1333 Pa

**+6300 Pa / -6000 Pa\***  
+4200 Pa / -4000 Pa

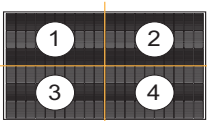
**+8000 Pa / -6000 Pa\***  
+5333 Pa / -4000 Pa

**820 - 910 mm**  
32,3 - 35,8 in

**+2000 Pa / -2000 Pa\***  
+1333 Pa / -1333 Pa

**+6300 Pa / -6000 Pa\***  
+4200 Pa / -4000 Pa

**+8000 Pa / -6000 Pa\***  
+5333 Pa / -4000 Pa



Once a module is secured in each of the 4 zones, additional clamps, i.e.,  $\geq 5$ , may be freely located on panel frame without affecting the warranty. Loads marked with a \* were not certified as part of IEC 61215/61730 testing; these have been evaluated by REC's internal testing process.

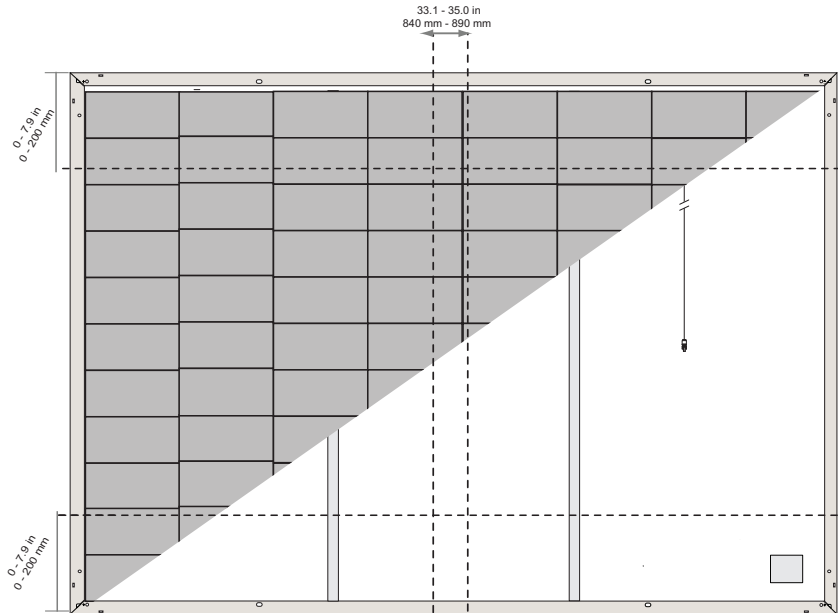
### ⚠ CAUTION

- The middle rail must not be installed on the side of the junction box where the cables exit.
- A total of three continuous rails (or other support structures) must be used to secure the panel.
- The center point of each clamp and the minimum grip length must be fully located within the marked zone to be rated to the given value.

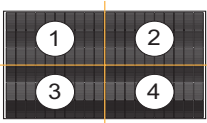
## MIXED SIX-POINT MOUNTING FOR SHORT RAILS: REC ALPHA PURE-RX

A mixed six-point mounting configuration secures the panel on three short rails (or other support structures) with three clamps on each side of the panel in the zones marked below:

Fig. 4-5 Mixed Six-Point Mounting of REC Alpha Pure-RX Series Panels using short rails



|   | Clearance Gap                  | 20 - 40 mm<br>0,8 - 1,6 in | 40 - 60 mm<br>1,6 - 2,4 in | >60 mm<br>>2,4 in                                  |
|---|--------------------------------|----------------------------|----------------------------|--|
|   | Clamping Zone                  | Test Load<br>Design Load   | Test Load<br>Design Load   | Test Load<br>Design Load                           |
| <p>Rail length under module 25 - 100 mm</p> <p>Long Side Mounting</p> <p>Short Side Mounting</p>  | 0 - 200 mm<br>0,0 - 7,9 in     | -                          | -                          | <b>+2400 Pa / -2400 Pa*</b><br>+1600 Pa / -1600 Pa |
|   | 840 - 890 mm<br>33,1 - 35,0 in | -                          | -                          | <b>+2400 Pa / -2400 Pa*</b><br>+1600 Pa / -1600 Pa |
| <p>Rail length under module 100 - 200 mm</p> <p>Long Side Mounting</p> <p>Short Side Mounting</p> | 0 - 200 mm<br>0,0 - 7,9 in     | -                          | -                          | <b>+2400 Pa / -2400 Pa*</b><br>+1600 Pa / -1600 Pa |
|   | 840 - 890 mm<br>33,1 - 35,0 in | -                          | -                          | <b>+2400 Pa / -2400 Pa*</b><br>+1600 Pa / -1600 Pa |



Once a module is secured in each of the 4 zones, additional clamps, i.e.,  $\geq 5$ , may be freely located on panel frame without affecting the warranty. Loads marked with a \* were not certified as part of IEC 61215/61730 testing; these have been evaluated by REC's internal testing process.

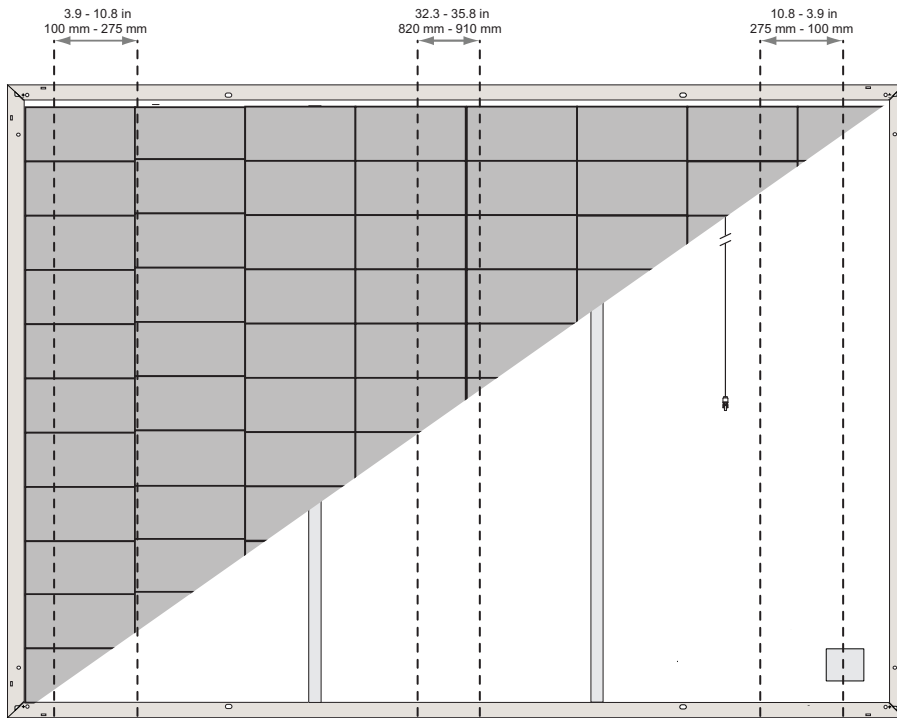
### ⚠ CAUTION

- The middle rail must not be installed on the side of the junction box where the cables exit.
- A total of three continuous rails (or other support structures) must be used to secure the panel.
- The center point of each clamp and the minimum grip length must be fully located within the marked zone to be rated to the given value.

## SIX POINT MOUNTING OF REC ALPHA PURE-RX FOR EXTREME LOADS

A six-point mounting configuration secures the panel on three continuous rails (or other support structures) with three clamps on each side of the panel in the zones marked below:

Fig. 4-6 Six-point mounting (extreme load): REC Alpha Pure-RX



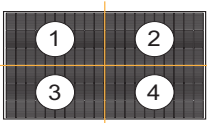
| Clearance Gap | 20 - 40 mm<br>0,8 - 1,6 in      | 40 - 60 mm<br>1,6 - 2,4 in      | >60 mm<br>>2,4 in               |
|---------------|---------------------------------|---------------------------------|---------------------------------|
| Clamping Zone | <b>Test Load</b><br>Design Load | <b>Test Load</b><br>Design Load | <b>Test Load</b><br>Design Load |



**100 - 275 mm**  
3,9 - 10,8 in

**+10000 Pa / -6000 Pa\***  
+6666 Pa / -4000 Pa

**820 - 910 mm**  
32,3 - 35,8 in



Once a module is secured in each of the 4 zones, additional clamps, i.e.,  $\geq 5$ , may be freely located on panel frame without affecting the warranty. Loads marked with a \* were not certified as part of IEC 61215/61730 testing; these have been evaluated by REC's internal testing process.



### CAUTION

- The middle rail must not be installed on the side of the junction box where the cables exit.
- A total of three continuous rails (or other support structures) must be used to secure the panel.
- The center point of each clamp and the minimum grip length must be fully located within the marked zone to be rated to the given value.



REC SOLAR PTE. LTD.  
20 TUAS SOUTH AVENUE 14  
SINGAPORE 637312  
SINGAPORE  
Tel: +65 6495 9228  
Mail: [post@recgroup.com](mailto:post@recgroup.com)

[www.recgroup.com](http://www.recgroup.com)