

PACKAGING & SHIPMENT SPECIFICATIONS

Applicable for the following REC solar panels:

- | | |
|-------------------------|--------------------------|
| REC Alpha Pure Series | REC Alpha Pure-R Series |
| REC Alpha Pure 2 Series | REC Alpha Pure-RX Series |
| REC TwinPeak 5 Series | REC N-Peak 3 Series |



CONTENTS

| | |
|---------------------------------------|----------|
| Introduction | 3 |
| REC Alpha Pure Series | 4 |
| REC Alpha Pure 2 Series | 5 |
| REC Alpha Pure-R Series | 6 |
| REC Alpha Pure-RX Series | 7 |
| REC N-Peak 3 Series* | 8 |
| REC TwinPeak 5 Series* | 9 |

*Product only available in the USA

+ Product not available in the USA

INTRODUCTION

REC believes that the packaging of our products is just as important as the product itself. To ensure our solar panels arrive with our customers in as good condition as possible, REC takes every care to ensure a high quality level of packaging and uses international testing standards to ensure the panels reach their destination in the best condition. Except where specifically stated, the information given on the following pages is relevant to all modules in the product family named and is therefore applicable to all product variants, e.g., different colored frames, backsheets, and/or cell types. The images shown are a generic representation of the instructions regardless of color or exact design.



PALLET HANDLING

This document contains instructions concerning the use and handling of pallets of REC solar panels. Following these instructions will ensure that the panels are in the best condition upon arrival at the installation site. Misuse or failure to follow these procedures may lead to damage or injury, and may invalidate the warranty on the product.

QUALITY

REC performs a quality check on all pallets before and during loading. Vehicles will only be loaded if they are deemed safe and serviceable. During transportation, the pallets are stably loaded in protected containers with air bags between them to secure them in position. The freight company and driver are responsible for ensuring suitable load safety for each delivery vehicle. Vehicles without suitable load safety measures will not be loaded. Loading without the use of air bags or loading belts to secure the pallets may lead to damage to the pallet(s) and/or module(s) during transportation which may invalidate the warranty. If using loading belts to secure pallets, ensure these are correctly fitted as over-tightening may cause damage to the modules or pallet(s).



RECYCLING

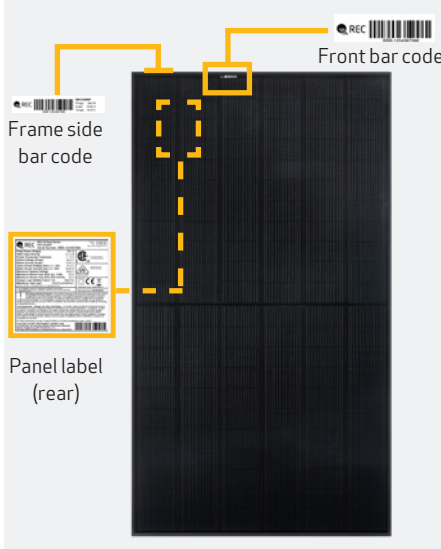
REC makes every effort to ensure the panel packaging is kept to a minimum and that environmentally-friendly materials are used wherever possible. This minimizes waste and discarded items to dispose of at the installation site. The wooden pallets can be re-used or recycled. The paper and cardboard packaging used on REC pallets can be also be widely recycled and the protective wrapping and panel separating blocks are also recyclable in many areas. Please check for all applicable procedures and recycle all packaging and panels according to local guidelines and regulations. REC makes every effort to ensure environmentally-friendly packaging materials are used. Please recycle whenever possible.

REC ALPHA PURE SERIES

PALLET FRONT VIEW (DOUBLE STACKED)



PANEL IDENTIFICATION



PALLET SHIPMENT DIMENSIONS

| | |
|---------------------------------|-----------------------|
| Length of pallet: | 1880 mm (74 in) |
| Width of pallet: | 1055 mm (41.5 in) |
| Height of single pallet stack: | 1205 mm (47.5 in) |
| Height of double pallet stack: | 2410 mm (95 in) |
| Pallet weight: | 41 kg (90.4 lbs) |
| Stack weight (pallet + panels): | ca. 735 kg (1620 lbs) |

DELIVERY INFORMATION

| | |
|--|-------------------|
| Panels per pallet: | 33 |
| Panels per 40 ft GP/high cube container: | 792 24 pallets |
| Panels per 13.6 m truck: | 924 28 pallets |
| Panels per 53 ft truck: | 858 26 pallets |

PALLET SIDE VIEW (DOUBLE STACKED)



PALLET STACKING



DELIVERY DOCUMENTATION

Documentation is located on short side of pallet. Pallet documentation includes:

- Module flash data
- Serial number
- Product name
- Watt class

PACKAGING MATERIAL

| | |
|----------------------------|-------------------------------|
| Pallet: | Wood |
| Foam pad: | Polyurethane Polyether Polyol |
| Top cover: | Corrugated cardboard |
| Edge protectors: | Core board - Kraft |
| Corner pieces and spacers: | HDPE |

PACKAGING DOCUMENTATION

REC395AA Pure

Parts: **6002462**

Pallet No: **L3394796_AAAA**

| No. | Serial | Imp[A] | Prog[W] | No. | Serial | Imp[A] | Prog[W] |
|-----|------------|--------|---------|-----|------------|--------|---------|
| 1 | 4008721147 | 9.587 | 396.8 | 18 | 4008720961 | 9.588 | 395.9 |
| 2 | 4008721051 | 9.563 | 396.8 | 19 | 4008721071 | 9.594 | 396.8 |
| 3 | 4008720948 | 9.575 | 397.6 | 20 | 4008721044 | 9.598 | 396.7 |
| 4 | 4008721168 | 9.582 | 396.7 | 21 | 4008721043 | 9.578 | 397.0 |
| 5 | 4008720969 | 9.586 | 396.1 | 22 | 4008721042 | 9.572 | 395.9 |
| 6 | 4008721128 | 9.590 | 399.8 | 23 | 4008721036 | 9.592 | 399.8 |
| 7 | 4008721171 | 9.566 | 396.7 | 24 | 4008720928 | 9.576 | 397.3 |
| 8 | 4008721014 | 9.589 | 396.1 | 25 | 4008721063 | 9.611 | 397.6 |
| 9 | 4008721078 | 9.580 | 397.2 | 26 | 4008721049 | 9.568 | 395.6 |
| 10 | 4008721114 | 9.578 | 396.6 | 27 | 4008721033 | 9.559 | 395.9 |
| 11 | 4008720943 | 9.584 | 396.4 | 28 | 4008721040 | 9.571 | 396.1 |
| 12 | 4008721084 | 9.580 | 396.1 | 29 | 4008721166 | 9.586 | 395.1 |
| 13 | 4008721088 | 9.594 | 396.3 | 30 | 4008721048 | 9.598 | 397.4 |
| 14 | 4008721072 | 9.579 | 396.2 | 31 | 4008720908 | 9.569 | 395.3 |
| 15 | 4008721075 | 9.593 | 396.7 | 32 | 4008720956 | 9.566 | 395.8 |
| 16 | 4008721087 | 9.593 | 397.8 | 33 | 4008720956 | 9.588 | 395.3 |
| 17 | 4008721064 | 9.563 | 396.1 | | | | |

Attention!

Weight: 735 kg (1620 lbs)

Improper handling will damage the content

Vorsicht!

Gewicht: 735 kg (1620 lbs)

Unsachgemäßer Transport führt zur Beschädigung der Ware

Quality Stamp

QUALITY

17/06/2021 10:43

ACCEPTED

Panel Handling

Attention

Wear clean gloves

Installation instructions:
Installationsanleitungen:
Guides d'emploi:
20.08.2019

www.recgroup.com/downloads

Made in Singapore

STORAGE AND TRANSPORTATION

| | |
|------------------------------|---------------|
| Stacking for storage: | 2 pallets max |
| Stacking for transportation: | 2 pallets max |

Note: When double stacking pallets, ensure the upper pallet sits securely on the edge protector to avoid damage to the lower pallet during transportation or handling

Note: Pallets delivered stacked are not bound together

MINIMUM FORK LENGTHS FOR TRANSPORTATION

| | | Single/Double stack only |
|-------------|------------|--------------------------|
| Forklift | Long side | 1.2 m (47 in) |
| | Short side | 1.5 m (59 in) |
| Pallet jack | Long side | X |
| | Short side | 1.5 m (59 in) |

Note: Forks must be spaced a minimum of 500 mm apart. Handlers must ensure that vehicles used for REC pallets can handle the specified load safely.

Note: Specifications subject to change without notice

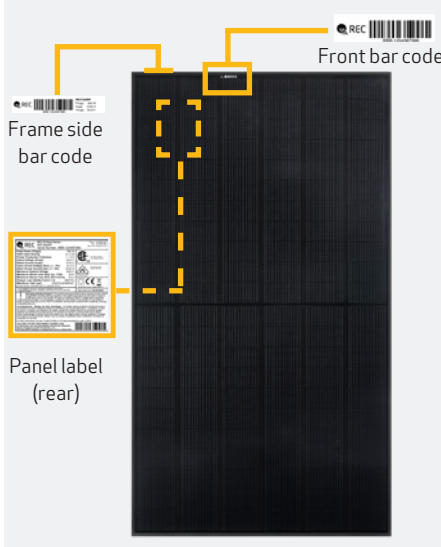
- Pallet No. 1 is the top module in a stack
- Pallet No. 33 is the lowest module in a stack
- Pallet documentation shows:
 - Module serial number
 - Module bar code
 - Manufacturing date
 - Electrical data (I_{MP}, P_{MP})

REC ALPHA PURE 2 SERIES

PALLET FRONT VIEW (DOUBLE STACKED)



PANEL IDENTIFICATION



PALLET SHIPMENT DIMENSIONS

| | |
|---------------------------------|-----------------------|
| Length of pallet: | 1910 mm (75.2 in) |
| Width of pallet: | 1090 mm (42.9 in) |
| Height of single pallet stack: | 1205 mm (47.5 in) |
| Height of double pallet stack: | 2410 mm (95 in) |
| Pallet weight: | 40 kg (88.2 lbs) |
| Stack weight (pallet + panels): | ca. 753 kg (1660 lbs) |

DELIVERY INFORMATION

| | |
|--|-------------------|
| Panels per pallet: | 33 |
| Panels per 40 ft GP/high cube container: | 792 24 pallets |
| Panels per 13.6 m truck: | 924 28 pallets |
| Panels per 53 ft truck: | 858 26 pallets |

PALLET SIDE VIEW (DOUBLE STACKED)



PALLET STACKING



DELIVERY DOCUMENTATION

Documentation is located on short side of pallet. Pallet documentation includes:

- Module flash data
- Serial number
- Product name
- Watt class

PACKAGING MATERIAL

| | |
|----------------------------|-------------------------------|
| Pallet: | Wood |
| Foam pad: | Polyurethane Polyether Polyol |
| Top cover: | Corrugated cardboard |
| Edge protectors: | Core board - Kraft |
| Corner pieces and spacers: | HDPE |

PACKAGING DOCUMENTATION

REC420AA Pure 2

Part No. **600000**

Pallet No: **L1234567_AAAA**

| No. | Serial Number | Imp[A] | Prog[0] | No. | Serial Number | Imp[A] | Prog[0] |
|-----|---------------|--------|---------|-----|---------------|--------|---------|
| 1 | 9180 | 451.1 | 30 | 17 | 9187 | 451.8 | 30 |
| 2 | 9181 | 451.2 | 30 | 18 | 9188 | 451.9 | 30 |
| 3 | 9182 | 451.3 | 30 | 19 | 9189 | 452.0 | 30 |
| 4 | 9183 | 451.4 | 30 | 20 | 9190 | 452.1 | 30 |
| 5 | 9184 | 451.5 | 30 | 21 | 9191 | 452.2 | 30 |
| 6 | 9185 | 451.6 | 30 | 22 | 9192 | 452.3 | 30 |
| 7 | 9186 | 451.7 | 30 | 23 | 9193 | 452.4 | 30 |
| 8 | 9187 | 451.8 | 30 | 24 | 9194 | 452.5 | 30 |
| 9 | 9188 | 451.9 | 30 | 25 | 9195 | 452.6 | 30 |
| 10 | 9189 | 452.0 | 30 | 26 | 9196 | 452.7 | 30 |
| 11 | 9190 | 452.1 | 30 | 27 | 9197 | 452.8 | 30 |
| 12 | 9191 | 452.2 | 30 | 28 | 9198 | 452.9 | 30 |
| 13 | 9192 | 452.3 | 30 | 29 | 9199 | 453.0 | 30 |
| 14 | 9193 | 452.4 | 30 | 30 | 9200 | 453.1 | 30 |
| 15 | 9194 | 452.5 | 30 | 31 | 9201 | 453.2 | 30 |
| 16 | 9195 | 452.6 | 30 | 32 | 9202 | 453.3 | 30 |
| 17 | 9196 | 452.7 | 30 | 33 | 9203 | 453.4 | 30 |

Modules: 33

Bottom

REC

Attention! Vorsicht!

Weight: 753 kg (1660 lbs) Gewicht: 753 kg (1660 lbs)

Improper handling will damage the content! Unsachgemäße Transport führt zur Beschädigung der Ware

Quality Stamp: QUALITY 1607002 843 ACCEPTED

Panel Handling: Attention! Wear clean gloves

Legal information about recycling for customers in Germany: Informationen für private Haushalte: Dieser Artikel ist ein Produkt aus 100% recyceltem Aluminium. Bitte trennen Sie ihn von anderen Abfällen ab und entsorgen Sie ihn in der entsprechenden Recyclingbox.

Electro- und Elektronikgeräte, die als Altöl gewertet sind, werden als Abfälle behandelt. Diese sind als Abfall zu behandeln und dürfen nicht in den Hausmüll gegeben werden. Bitte trennen Sie diese von anderen Abfällen ab und entsorgen Sie sie in der entsprechenden Recyclingbox.

Das auf Elektro- und Elektronikgeräten regelmäßig abgebildete Symbol über durchgeschlagenen Mülltonne weist darauf hin, dass das jeweilige Gerät am Ende seiner Lebensdauer getrennt von anderen Abfällen zu entsorgen ist.

Recycling-Symbole: Recyceltes Aluminium, Qualität 1607002, 20 02 01 01, www.recgroup.com/india

Made in Singapore

- Pallet No. 1 is the top module in a stack
- Pallet No. 33 is the lowest module in a stack
- Pallet documentation shows:
 - Module serial number
 - Module bar code
 - Manufacturing date
 - Electrical data (I_{MP}, P_{MP})

STORAGE AND TRANSPORTATION

Stacking for storage: 2 pallets max
Stacking for transportation: 2 pallets max

Note: When double stacking pallets, ensure the upper pallet sits securely on the edge protector to avoid damage to the lower pallet during transportation or handling

Note: Pallets delivered stacked are not bound together

MINIMUM FORK LENGTHS FOR TRANSPORTATION

| | | Single/Double stack only |
|-------------|------------|--------------------------|
| Forklift | Long side | 1.2 m (47 in) |
| | Short side | 1.5 m (59 in) |
| Pallet jack | Long side | X |
| | Short side | 1.5 m (59 in) |

Note: Forks must be spaced a minimum of 500 mm apart
Handlers must ensure that vehicles used for REC pallets can handle the specified load safely.

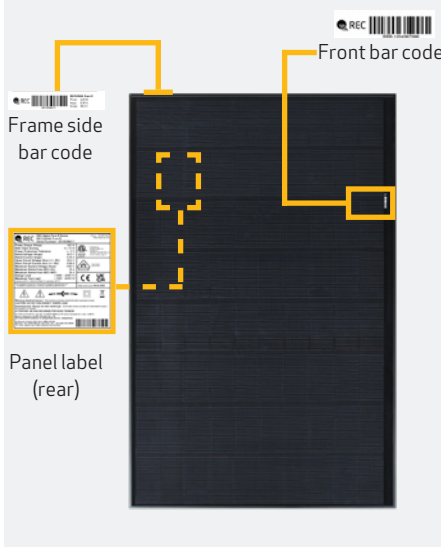
Note: Specifications subject to change without notice

REC ALPHA PURE-R SERIES

PALLET FRONT VIEW (DOUBLE STACKED)



PANEL IDENTIFICATION



PALLET SHIPMENT DIMENSIONS

| | |
|---------------------------------|-----------------------|
| Length of pallet: | 1780 mm (70 in) |
| Width of pallet: | 1150 mm (45.2 in) |
| Height of single pallet stack: | 1220 mm (48 in) |
| Height of double pallet stack: | 2440 mm (96 in) |
| Pallet weight: | 39 kg (86 lbs) |
| Stack weight (pallet + panels): | ca. 753 kg (1660 lbs) |

DELIVERY INFORMATION

| | |
|--|---------------------|
| Panels per pallet: | 33 |
| Panels per 40 ft GP/high cube container: | 858 (26 pallets) |
| Panels per 13.6 m truck: | 924 (28 pallets) |
| Panels per 53 ft truck: | 858 (26 pallets) |

PALLET SIDE VIEW (DOUBLE STACKED)



PALLET STACKING



DELIVERY DOCUMENTATION

Documentation is located on short side of pallet. Pallet documentation includes:

- Module flash data
- Serial number
- Product name
- Watt class

PACKAGING MATERIAL

| | |
|----------------------------|-------------------------------|
| Pallet: | Wood |
| Foam pad: | Polyurethane Polyether Polyol |
| Top cover: | Corrugated cardboard |
| Edge protectors: | Core board - Kraft |
| Corner pieces and spacers: | HDPE |

PACKAGING DOCUMENTATION

REC410AA Pure-R REC

Part: **6002462** Pallet No: **L3394796_AAAA**

| No. | Serial | Top | Imp(A) | Pmp(W) | No. | Serial | Bottom | Imp(A) | Pmp(W) |
|-----|------------|-------|--------|--------|------------|--------|--------|--------|--------|
| 1) | 4088721047 | 9.587 | 396.8 | 18) | 4088720961 | 9.588 | 395.9 | | |
| 2) | 4088721050 | 9.582 | 396.8 | 19) | 4088721071 | 9.594 | 396.8 | | |
| 3) | 4088720948 | 9.576 | 397.6 | 20) | 4088721041 | 9.599 | 396.7 | | |
| 4) | 4088721018 | 9.582 | 396.7 | 21) | 4088721049 | 9.578 | 397.0 | | |
| 5) | 4088720949 | 9.586 | 396.1 | 22) | 4088721042 | 9.572 | 395.9 | | |
| 6) | 4088721028 | 9.596 | 396.8 | 23) | 4088721036 | 9.592 | 396.8 | | |
| 7) | 4088721171 | 9.586 | 396.7 | 24) | 4088720928 | 9.576 | 397.2 | | |
| 8) | 4088721014 | 9.589 | 396.1 | 25) | 4088721083 | 9.611 | 397.6 | | |
| 9) | 4088721078 | 9.589 | 397.2 | 26) | 4088721049 | 9.568 | 396.4 | | |
| 10) | 4088721114 | 9.578 | 396.6 | 27) | 4088721033 | 9.589 | 395.9 | | |
| 11) | 4088720943 | 9.584 | 396.4 | 28) | 4088721040 | 9.571 | 396.1 | | |
| 12) | 4088721084 | 9.580 | 396.1 | 29) | 4088721016 | 9.581 | 396.1 | | |
| 13) | 4088721088 | 9.594 | 396.3 | 30) | 4088721048 | 9.596 | 397.4 | | |
| 14) | 4088721072 | 9.579 | 396.2 | 31) | 4088720938 | 9.569 | 395.8 | | |
| 15) | 4088721075 | 9.593 | 396.7 | 32) | 4088720956 | 9.566 | 395.8 | | |
| 16) | 4088721087 | 9.592 | 397.0 | 33) | 4088720939 | 9.588 | 395.3 | | |
| 17) | 4088721064 | 9.563 | 396.1 | | | | | | |

Attention / Vorsicht

Weight: 753 kg (1660 lbs) / Gewicht: 753 kg (1660 lbs)

Improper handling will damage the content / Unsachgemäßer Transport führt zur Beschädigung der Ware

Quality Stamp: 17/06/2021 10:43 ACCEPTED

Panel Handling: Attention Wear clean gloves

Installation instructions: Installationsanleitung / Guides d'emploi: 安装说明书

www.recgroup.com/en/products

- Pallet No. 1 is the top module in a stack
- Pallet No. 33 is the lowest module in a stack
- Pallet documentation shows:
 - Module serial number
 - Module bar code
 - Manufacturing date
 - Electrical data (I_{MP}, P_{MP})

STORAGE AND TRANSPORTATION

| | |
|------------------------------|---------------|
| Stacking for storage: | 2 pallets max |
| Stacking for transportation: | 2 pallets max |

Note: When double stacking pallets, ensure the upper pallet sits securely on the edge protector to avoid damage to the lower pallet during transportation or handling

Note: Pallets delivered stacked are not bound together

MINIMUM FORK LENGTHS FOR TRANSPORTATION

| | | Single/Double stack only |
|-------------|------------|--------------------------|
| Forklift | Long side | 1.2 m (47 in) |
| | Short side | 1.5 m (59 in) |
| Pallet jack | Long side | X |
| | Short side | 1.5 m (59 in) |

Note: Forks must be spaced a minimum of 500 mm apart. Handlers must ensure that vehicles used for REC pallets can handle the specified load safely.

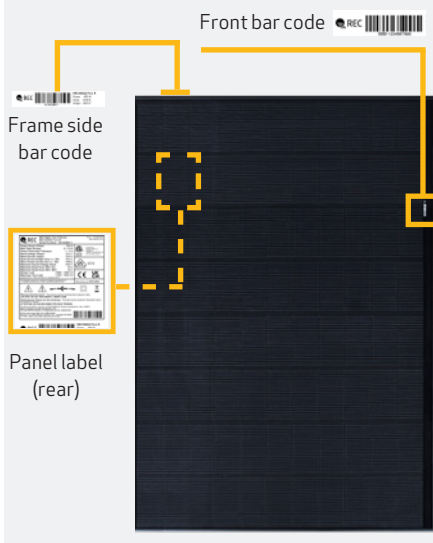
Note: Specifications subject to change without notice

REC ALPHA PURE-RX SERIES

PALLET FRONT VIEW (DOUBLE STACKED)



PANEL IDENTIFICATION



PALLET SHIPMENT DIMENSIONS

| | |
|---------------------------------|-----------------------|
| Length of pallet: | 1780 mm (70 in) |
| Width of pallet: | 1240 mm (49 in) |
| Height of single pallet stack: | 1220 mm (48 in) |
| Height of double pallet stack: | 2440 mm (96 in) |
| Pallet weight: | ~40 kg (88 lbs) |
| Stack weight (pallet + panels): | ca. 812 kg (1790 lbs) |

DELIVERY INFORMATION

| | |
|--|---------------------|
| Panels per pallet: | 33 |
| Panels per 40 ft GP/high cube container: | 594 (18 pallets) |
| Panels per 13.6 m truck: | 660 (20 pallets) |
| Panels per 53 ft truck: | 792 (24 pallets) |

PALLET SIDE VIEW (DOUBLE STACKED)



PALLET STACKING



DELIVERY DOCUMENTATION

Documentation is located on short side of pallet. Pallet documentation includes:

- Module flash data
- Serial number
- Product name
- Watt class

PACKAGING MATERIAL

| | |
|----------------------------|-------------------------------|
| Pallet: | Wood |
| Foam pad: | Polyurethane Polyether Polyol |
| Top cover: | Corrugated cardboard |
| Edge protectors: | Core board - Kraft |
| Corner pieces and spacers: | HDPE |

PACKAGING DOCUMENTATION

REC460AA Pure-RX Pallet No: L1234567_AAAA

Part: 6000000

| Top | Serial Number | Serial Number |
|-----|---------------|---------------|
| 1 | 8.280.001 | 8.280.001 |
| 2 | 8.280.002 | 8.280.002 |
| 3 | 8.280.003 | 8.280.003 |
| 4 | 8.280.004 | 8.280.004 |
| 5 | 8.280.005 | 8.280.005 |
| 6 | 8.280.006 | 8.280.006 |
| 7 | 8.280.007 | 8.280.007 |
| 8 | 8.280.008 | 8.280.008 |
| 9 | 8.280.009 | 8.280.009 |
| 10 | 8.280.010 | 8.280.010 |
| 11 | 8.280.011 | 8.280.011 |
| 12 | 8.280.012 | 8.280.012 |
| 13 | 8.280.013 | 8.280.013 |
| 14 | 8.280.014 | 8.280.014 |
| 15 | 8.280.015 | 8.280.015 |
| 16 | 8.280.016 | 8.280.016 |
| 17 | 8.280.017 | 8.280.017 |
| 18 | 8.280.018 | 8.280.018 |
| 19 | 8.280.019 | 8.280.019 |
| 20 | 8.280.020 | 8.280.020 |
| 21 | 8.280.021 | 8.280.021 |
| 22 | 8.280.022 | 8.280.022 |
| 23 | 8.280.023 | 8.280.023 |
| 24 | 8.280.024 | 8.280.024 |
| 25 | 8.280.025 | 8.280.025 |
| 26 | 8.280.026 | 8.280.026 |
| 27 | 8.280.027 | 8.280.027 |
| 28 | 8.280.028 | 8.280.028 |
| 29 | 8.280.029 | 8.280.029 |
| 30 | 8.280.030 | 8.280.030 |
| 31 | 8.280.031 | 8.280.031 |
| 32 | 8.280.032 | 8.280.032 |
| 33 | 8.280.033 | 8.280.033 |

Modules: 33

Made in Singapore

STORAGE AND TRANSPORTATION

| | |
|------------------------------|---------------|
| Stacking for storage: | 2 pallets max |
| Stacking for transportation: | 2 pallets max |

Note: When double stacking pallets, ensure the upper pallet sits securely on the edge protector to avoid damage to the lower pallet during transportation or handling

Note: Pallets delivered stacked are not bound together

MINIMUM FORK LENGTHS FOR TRANSPORTATION

| | | Single/Double stack only |
|-------------|------------|--------------------------|
| Forklift | Long side | 1.2 m (47 in) |
| | Short side | 1.5 m (59 in) |
| Pallet jack | Long side | X |
| | Short side | 1.5 m (59 in) |

Note: Forks must be spaced a minimum of 500 mm apart. Handlers must ensure that vehicles used for REC pallets can handle the specified load safely.

Note: Specifications subject to change without notice

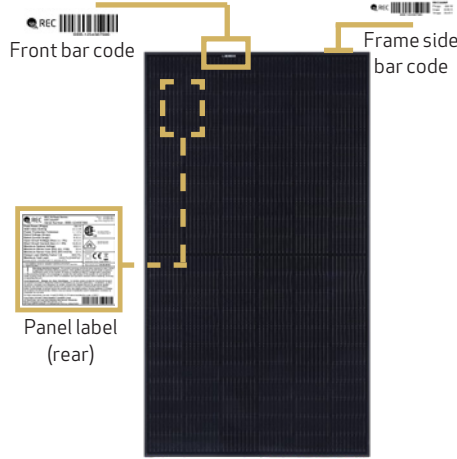
- Pallet No. 1 is the top module in a stack
- Pallet No. 33 is the lowest module in a stack
- Pallet documentation shows:
 - Module serial number
 - Module bar code
 - Manufacturing date
 - Electrical data (I_{MP}, P_{MP})

REC N-PEAK 3 SERIES (ONLY AVAILABLE IN THE USA)

PALLET FRONT VIEW (DOUBLE STACKED)



PANEL IDENTIFICATION



PALLET SHIPMENT DIMENSIONS

| | |
|---------------------------------|--------------|
| Length of pallet: | 76.7 in |
| Width of pallet: | 43 in |
| Height of single pallet stack: | 47.5 in |
| Height of double pallet stack: | 95 in |
| Pallet weight: | 88.2 lbs |
| Stack weight (pallet + panels): | ca. 1660 lbs |

DELIVERY INFORMATION

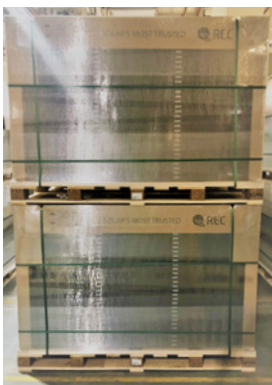
| | |
|--|---------------------|
| Panels per pallet: | 33 |
| Panels per GP/high cube container (40 ft): | 792 (24 pallets) |
| Panels per 53 ft truck: | 858 (26 pallets) |

DELIVERY DOCUMENTATION

Documentation is located on short side of pallet.
Pallet documentation includes:

- Module flash data
- Serial number
- Product name
- Watt class

PALLET SIDE VIEW (DOUBLE STACKED)



PALLET STACKING



PACKAGING MATERIAL

| | |
|----------------------------|-------------------------------|
| Pallet: | Wood |
| Foam pad: | Polyurethane Polyether Polyol |
| Top cover: | Corrugated cardboard |
| Edge protectors: | Coreboard - Kraft |
| Corner pieces and spacers: | HDPE |

STORAGE AND TRANSPORTATION

| | |
|------------------------------|---------------|
| Stacking for storage: | 2 pallets max |
| Stacking for transportation: | 2 pallets max |

Note: When double stacking pallets, ensure the upper pallet sits securely on the edge protector to avoid damage to the lower pallet during transportation or handling

Note: Pallets delivered stacked are not bound together.

PACKAGING DOCUMENTATION

RECXXXNP3 Black

Part: **Top 5000000** Pallet No: **L1234567_AAAA**

| No. Serial | Seq(A) | Part | No. Serial | Seq(A) | Part |
|----------------|--------|------------|------------|------------|------|
| 1) 9780 002.9 | 30 | 9874 003.9 | 31 | 9780 004.9 | 32 |
| 2) 9781 003.9 | 31 | 9875 004.9 | 32 | 9781 005.9 | 33 |
| 3) 9782 004.9 | 32 | 9876 005.9 | 33 | 9782 006.9 | 34 |
| 4) 9783 005.9 | 33 | 9877 006.9 | 34 | 9783 007.9 | 35 |
| 5) 9784 006.9 | 34 | 9878 007.9 | 35 | 9784 008.9 | 36 |
| 6) 9785 007.9 | 35 | 9879 008.9 | 36 | 9785 009.9 | 37 |
| 7) 9786 008.9 | 36 | 9880 009.9 | 37 | 9786 010.9 | 38 |
| 8) 9787 009.9 | 37 | 9881 010.9 | 38 | 9787 011.9 | 39 |
| 9) 9788 010.9 | 38 | 9882 011.9 | 39 | 9788 012.9 | 40 |
| 10) 9789 011.9 | 39 | 9883 012.9 | 40 | 9789 013.9 | 41 |
| 11) 9790 012.9 | 40 | 9884 013.9 | 41 | 9790 014.9 | 42 |
| 12) 9791 013.9 | 41 | 9885 014.9 | 42 | 9791 015.9 | 43 |
| 13) 9792 014.9 | 42 | 9886 015.9 | 43 | 9792 016.9 | 44 |
| 14) 9793 015.9 | 43 | 9887 016.9 | 44 | 9793 017.9 | 45 |
| 15) 9794 016.9 | 44 | 9888 017.9 | 45 | 9794 018.9 | 46 |
| 16) 9795 017.9 | 45 | 9889 018.9 | 46 | 9795 019.9 | 47 |
| 17) 9796 018.9 | 46 | 9890 019.9 | 47 | 9796 020.9 | 48 |

Attention!

Ingewone handling will damage the content

QUALITY 18/07/2017 8:43

ACCEPTED

Voracht!

Umschoppenden Transport führt zur Beschädigung der Ware

Panel Handling

Attention Wear Clean gloves

Legal information about recycling for customers in Germany:
Informationen für private Haushalte:
Elektronik- und Elektrogeräte, die zu Altöl gehören sind, werden als Abfälle betrachtet. Beachtet vor Abgeben haben diese eine sehr empfindlichen Schadstoffgehalt. Bitte beachten Sie die Anweisungen der Hersteller und entsorgen Sie diese in einem dafür vorgesehenen Sammel- und Entsorgungssystem.
Beachten vor Abgeben aus privaten Haushalten können diese bei den Sammelstellen der öffentlichen Entsorgungssysteme oder bei den von Herstellern oder Lieferanten im Sinne des Elektro- und Elektronik-Altgeräten (EoA) vorgesehenen Sammelstellen abgegeben werden.
Das auf Elektro- und Elektronikgeräten regelmäßig abgebildete Symbol einer durchgestrichenen Mülltonne weist darauf hin, dass das jeweilige Gerät ein Elektro- und Elektronikgeräten getrennt vom unsortierten Hausmüll zu entsorgen ist.

Serial number list in file:
Installationsanleitung/eng
Guides d'emploi
22 02 01 01
www.en.genp.com/downloads

Made in Singapore

MINIMUM FORK LENGTHS FOR TRANSPORTATION

| | | Single/Double stack only |
|-------------|------------|--|
| Forklift | Long side | 47 in Loading & unloading of container only |
| | Short side | 59 in |
| Pallet jack | Long side | X |
| | Short side | 59 in |

Note: Forks must be spaced a minimum of 20 in apart
Handlers must ensure that vehicles used for REC pallets can handle the specified load safely.

Note: Specifications subject to change without notice

- Pallet No. 1 is the top module in a stack
- Pallet No. 33 is the lowest module in a stack
- Pallet documentation shows:
 - Module serial number
 - Module bar code
 - Manufacturing date
 - Electrical data (I_{MP}, P_{MP})

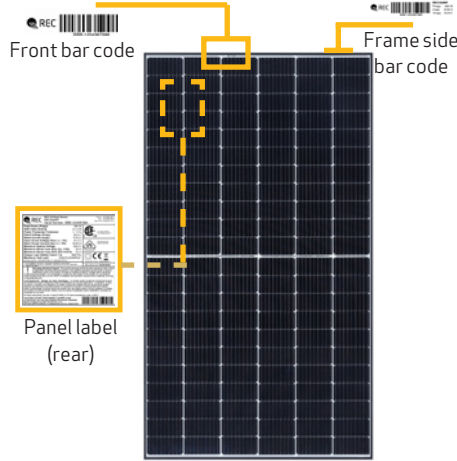
REC TWINPEAK 5 SERIES (NOT AVAILABLE IN THE USA)

These packaging specifications are applicable to the following products:
 REC TwinPeak 5 Series REC TwinPeak 5 Black Series

PALLET FRONT VIEW (DOUBLE STACKED)



PANEL IDENTIFICATION



PALLET SHIPMENT DIMENSIONS

| | |
|---------------------------------|------------|
| Length of pallet: | 1950 mm |
| Width of pallet: | 1090 mm |
| Height of single pallet stack: | 1205 mm |
| Height of double pallet stack: | 2410 mm |
| Pallet weight: | 40 kg |
| Stack weight (pallet + panels): | ca. 753 kg |

DELIVERY INFORMATION

| | |
|--|------------------|
| Panels per pallet: | 33 |
| Panels per GP/high cube container (40 ft): | 792 (24 pallets) |
| Panels per 13.6 m truck: | 924 (28 pallets) |

DELIVERY DOCUMENTATION

| | |
|---------------------|---------------|
| Flash data list: | On short side |
| Serial number list: | On short side |
| Product name: | On long side |
| Watt class: | On long side |

PACKAGING MATERIAL

| | |
|----------------------------|-------------------------------|
| Pallet: | Wood |
| Foam pad: | Polyurethane Polyether Polyol |
| Top cover: | Corrugated cardboard |
| Edge protectors: | Core board - Kraft |
| Corner pieces and spacers: | HDPE |

STORAGE AND TRANSPORTATION

| | |
|------------------------------|---------------|
| Stacking for storage: | 2 pallets max |
| Stacking for transportation: | 2 pallets max |

Note: When double stacking pallets, ensure the upper pallet sits securely on the edge protector to avoid damage to the lower pallet during transportation or handling

Note: Pallets delivered stacked are not bound together.

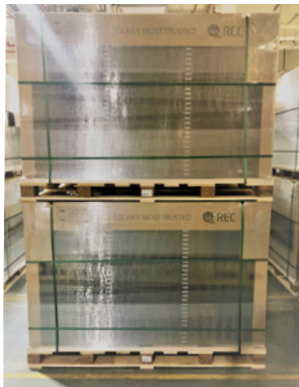
MINIMUM FORK LENGTHS FOR TRANSPORTATION

| | | Single/Double stack only |
|-------------|------------|--------------------------|
| Forklift | Long side | 1.2 m |
| | Short side | 1.5 m |
| Pallet jack | Long side | X |
| | Short side | 1.5 m |

Note: Forks must be spaced a minimum of 500 mm apart
 Handlers must ensure that vehicles used for REC pallets can handle the specified load safely.

Note: Specifications subject to change without notice

PALLET SIDE VIEW (DOUBLE STACKED)



PALLET STACKING



PACKAGING DOCUMENTATION

RECXXXTP5 Black

Part: **Top 600000** Pallet No: **L1234567_AA**

| No. | Serial | Imp(A) | Prog(P) | No. | Serial | Imp(A) | Prog(P) |
|-----|--------|--------|---------|------------|--------|--------|---------|
| 1 | 9089 | 402.9 | 20 | 1878543219 | 9.786 | 404.4 | |
| 2 | 9.748 | 404.9 | 19 | 1878543219 | 9.854 | 402.9 | |
| 3 | 9.762 | 403.9 | 20 | 1878543219 | 9.729 | 402.9 | |
| 4 | 9.729 | 403.2 | 23 | 1878543219 | 9.809 | 402.2 | |
| 5 | 9.762 | 404.2 | 23 | 1878543219 | 9.874 | 402.9 | |
| 6 | 9.729 | 402.9 | 23 | 1878543219 | 9.749 | 404.9 | |
| 7 | 9.886 | 405.7 | 24 | 1878543219 | 9.864 | 402.4 | |
| 8 | 9.762 | 404.9 | 25 | 1878543219 | 9.758 | 404.9 | |
| 9 | 9.886 | 403.2 | 26 | 1878543219 | 9.863 | 402.2 | |
| 10 | 9.887 | 403.4 | 27 | 1878543219 | 9.889 | 402.7 | |
| 11 | 9.886 | 402.9 | 28 | 1878543219 | 9.742 | 402.2 | |
| 12 | 9.898 | 404.9 | 29 | 1878543219 | 9.843 | 402.2 | |
| 13 | 9.898 | 403.4 | 30 | 1878543219 | 9.873 | 402.9 | |
| 14 | 9.721 | 404.9 | 31 | 1878543219 | 9.883 | 402.9 | |
| 15 | 9.886 | 405.7 | 32 | 1878543219 | 9.724 | 402.9 | |
| 16 | 9.886 | 402.9 | 33 | 1878543219 | 9.850 | 402.3 | |
| 17 | 9.887 | 403.4 | | | | | |

Modules: 33

Bottom

Made in Singapore

- Pallet No. 1 is the top module in a stack
- Pallet No. 33 is the lowest module in a stack
- Pallet documentation shows:
 - Module serial number
 - Module bar code
 - Manufacturing date
 - Electrical data (I_{MP}, P_{MP})



REC SOLAR PTE. LTD.
20 TUAS SOUTH AVENUE 14
SINGAPORE 637312
SINGAPORE
Tel: +65 6495 9228
Mail: post@recgroup.com

www.recgroup.com