

BSS YONAGO POWER PLANT JAPAN

GROUND-MOUNTED INSTALLATION

- Effective use of open land at broadcasting station
- Only three months needed for installation covering 29,400 m²
- Strong investment thanks to attractive schemes and high performance

1.7

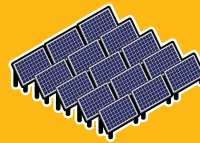
MW
SYSTEM SIZE

1,840

MWh
ANNUAL CAPACITY

1,200

TONS CO₂
SAVED ANNUALLY



POWER PLANT
INSTALLATION

By converting a medium radio wave transmission station to also include a solar power plant comprised of 7,056 REC Peak Energy Series solar panels, Advantec and Japanese broadcaster BSS have created a solid investment for the future.

“We are feeding 100% of the electricity to the grid for which we need excellent product quality and performance backed by strong warranties. REC is the right choice.”

MASAHIDE YAMANA, PRESIDENT, ADVANTEC



ON THE GROUNDS OF JAPANESE RADIO and TV station BSS (Broadcasting System of San-in) in Yonago, more than 7,000 REC solar panels are installed – creating a 1.7 MW power plant that produces enough electricity to power 510 Japanese households.

The ground-mounted installation covers an area of 29,400 m² and was efficiently built by Advantec, a partner of REC in Japan since 2011. Advantec and BSS equally share the ownership of the solar power plant.

“We are proud to have completed the construction of this plant so quickly – just three months from start to finish,” says Masahide Yamana, President of Advantec. “We are feeding 100 percent of the electricity generated into the grid for which we need excellent product quality and performance backed by strong warranties. REC is the right choice.”



With the Japanese feed-in tariff scheme in place, owners of solar power plants using solar panels from REC can expect positive returns while contributing to local and global environmental initiatives.

By constructing this power plant in the open grounds of the BSS medium radio wave transmission station, the effective use of land is helping Advantec and BSS to achieve both goals. The BSS Yonago Power Plant offsets 1,200 tons of CO₂ emissions each year.

The ribbon cutting ceremony to officially inaugurate the power plant was held on March 27, 2013 and was attended by such dignitaries as Mr. Shinij Hirai (Mayor of Tottori Prefecture) and His Excellency Arne Walther (Norway's Ambassador to Japan). With REC's strong global presence, Mr. Walther's attendance represented the Norwegian heritage of REC.

PROJECT OVERVIEW

BSS YONAGO POWER PLANT

GROUND MOUNTED INSTALLATION

Owner:

Advantec & Broadcasting System of San-in (BSS)
(Land owner: BSS)

Location:

Yonago, Tottori, Japan

Type of Installation:

Ground-mounted power plant

System Size:

1.7 MW

Solar Panel Type:

REC 250 PE

Number of Solar Panels Installed:

7,056

Annual Capacity:

1,840 MWh

Completion Date:

March 2013

EPC:

Advantec

REC is a leading global provider of solar energy solutions. With more than 15 years of experience, we offer sustainable, high performing products, services and investments for the solar industry. Together with our partners, we create value by providing solutions that better meet the world's growing energy needs. REC is headquartered in Norway and listed on the Oslo Stock Exchange (ticker: RECSOL). Our 1,600 employees worldwide generated revenues of USD 647 million in 2013.



www.recgroup.com